

## Limpopo Province



Limpopo province has the 4<sup>th</sup> largest population in SA with the 3<sup>rd</sup> lowest household access to piped water, at 83.6%. Limpopo is the poorest of all provinces with most of the districts falling into the two lowest (worst) socio-economic quintiles in SA. Some five-million people (92.7% of the population) did not have access to a medical aid scheme in 2007.

The PHC expenditure increased by R58 per capita in 2007/08 to R271 but was still below the average for SA. Poor districts require greater-than-average resources, not less! The PHC utilisation rate (2.6 visits per person per year) was constant for the past four years, but there is great variability across the districts ranging from 3.6 visits per person in Vhembe to 1.7 in Greater Sekhukhune. The nurse clinical workload decreased slightly from 18.7 in 2006/07 to 17.5 patients per nurse per day and continues to be the lowest in the country for the 5<sup>th</sup> year running. The three districts with the lowest workload in the country are contained in this province.

The clinic supervision rate was the 2<sup>nd</sup> highest in the country at 58.7% in 2006/07, which is very low and there is still much room for improvement. The proportion of expenditure on district management increased from 2.6% to 4.0%.

The average length of stay in a district hospital (4.4 days) was the same as the national average, while the bed utilisation rate decreased from 67.3% to 64.3% in 2007/08 which is slightly below the national average.

The TB cure rate remained constant around 60% in 2006 and the smear conversion rate increased slightly from 54.3% to 56.4% in 2007/08. Although Limpopo has the lowest incidence of TB in the country, this is insufficient growth for a priority programme and needs urgent attention.

It is pleasing to note that the proportion of ANC clients tested for HIV continued to increase steadily over the years to 90.1%, the 2<sup>nd</sup> highest in SA in 2007/08. Another steady increase was the nevirapine uptake rate of HIV+ve mothers, from 38.5% in 2003/04 to 63.3% in 2007/08. However with considerable fluctuation in the nevirapine uptake indicators, particularly among babies making interpretation difficult, there is room for improved monitoring of this programme.

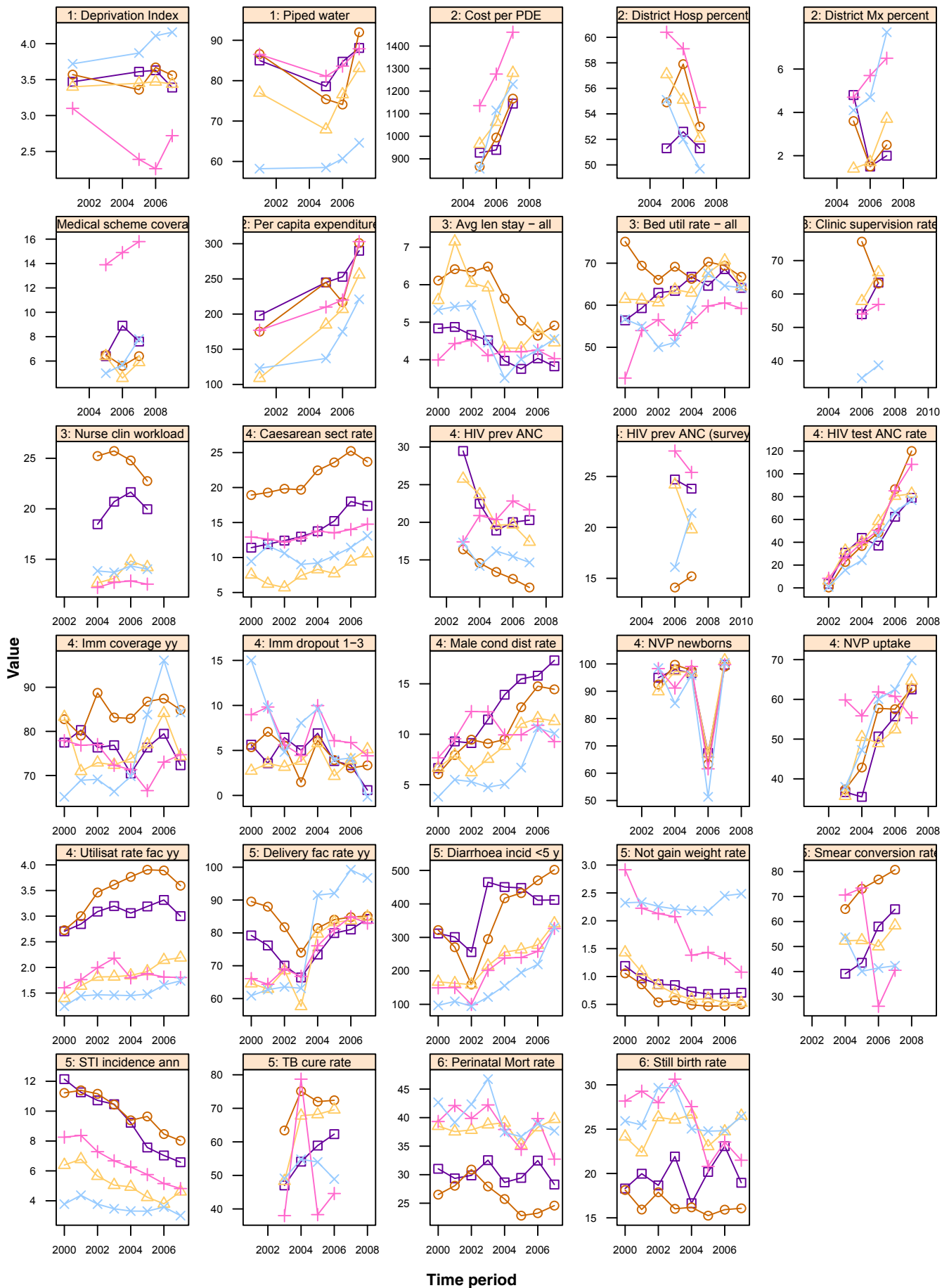
The incidence of diarrhoea in children under five years old increased from 267.2 in 2003/04 to 393.5 cases per 1000, the 2<sup>nd</sup> highest in the SA in 2007/08. The rate of children not gaining weight in the same age group remained static at 0.9% for the last three years, but with a five-fold range between districts.

Although the condom distribution rate has not changed in the past year and is currently on 12.9 condoms per male per year the STI incidence has steadily dropped from 7.4% in 2003/04 to 5.6% in 2007/08. However this rate is still above the national average of 4.4%.

There was a steady increase in the Caesarean section rate from 12.2% in 2003/04 to 15.8% in 2007/08, which ranged from a high of 27.7% in Vhembe to a low of 10.6% in Capricorn. The delivery rate in facilities increased to 86.8%, although the very high rate in Greater Sekhukhune (96.7%) is unusual in an ISRDP district and may be incorrect. Both the stillbirth and perinatal mortality rates decreased slightly in 2007/08 to 21.7 and 32.3 per 1000 births respectively.

The immunisation coverage in the province decreased from 84.9% in 2006/07 to 78.6% in 2007/08 whilst the drop out improved from 3.9 to 2.6% in the past year.

Annual indicators for districts in Limpopo (LP)



Districts					
DC33: Mopani	□	DC35: Capricorn	△	DC47: Greater Sekhukhune	×
DC34: Vhembe	○	DC36: Waterberg	+		

LP	Limpopo	Year					District Rank (1=best) most recent	National value most recent
		2003/04	2004/05	2005/06	2006/07	2007/08		
Demographic and socio-economic	Population total			5 139 990	5 287 109	5 323 009		47 844 347
	Medical aid coverage (%)			6.6	6.7	7.3	-	14.3
	Access to piped water (%) - (2005-06 GHS, 2007 Comm. Survey)			72.4	75.2	83.6	-	85.8
	Deprivation index - (high value = most deprived)			-	-	-	-	
	Socio-economic quintile - (1=poor, 5=best)			-	-	-	-	
Input	Non-hospital PHC expenditure per capita - (real 2007/08 prices)			204	213	271	-	302
	% District health services expenditure on District Management			3.6	2.6	4.0		5.1
	% District health services expenditure on District Hospitals			55.3	55.3	52.1		42.7
	Cost per PDE			926	1 051	1 232		1128
Process	Nurse clinical workload		17.4	18.2	18.7	17.5	-	23.7
	Average length of stay (ALOS)	5.3	4.3	4.3	4.4	4.4	-	4.4
	Bed utilisation rate (BUR)	61.6	62.9	66.8	67.3	64.3	-	65.3
	Clinic supervision rate	-	-	-	57.4	58.7	-	48.2
Output	Male condom distribution rate	8.7	9.5	11.4	13.0	12.9	-	11.8
	Immunisation coverage < 1 year	74.9	74.4	79.5	84.9	78.6	-	84.2
	Immunisation drop out rate (DTP1-3)	4.3	7.3	3.8	3.9	2.6	-	3.4
	Caesarean section rate	12.2	13.0	13.7	15.4	15.8		15.6
	Proportion ANC clients tested for HIV	25.9	36.9	47.6	75.0	90.1	-	79.6
	HIV prevalence among ANC clients tested (DHIS)	22.8	19.6	17.4	17.4	16.2	-	24.4
	HIV prevalence among ANC clients tested (survey)	-	-	-	20.6 (18.9-22.3)	18.5 (16.7-20.4)	-	28.3
	Nevirapine uptake rate among newborn babies of HIV+ve women	93.8	96.1	97.2	62.6	100.1	-	102.3
	Nevirapine uptake rate among pregnant HIV+ve women	38.5	45.3	55.0	57.2	63.3	-	76.1
Utilisation rate	2.5	2.5	2.6	2.7	2.6	-	2.2	
Outcome	Incidence of STI treated - new	7.4	6.8	6.3	5.7	5.6	-	4.4
	TB cure rate (2004 - 2006)	53.6	69.5	60.8	60.4		-	62.7
	TB smear conversion rate (2004 - 2007)	49.7	43.2	62.0	54.3	56.4	-	60.5
	TB case load (new Sm+)	-	-	-	-	7 734		135 604
	Diarrhoea incidence under 5 years	267.2	314.7	328.3	341.3	393.5	-	254.0
	Not gaining weight under 5 years rate	1.0	0.9	0.8	0.9	0.9	-	1.3
Impact	Delivery rate in facility	65.7	80.7	84.1	86.4	86.8	-	80.6
	Stillbirth rate	23.4	21.8	20.6	22.0	21.7	-	23.0
	Perinatal mortality rate in facility	36.2	33.1	31.0	33.5	32.3	-	31.1

Number of health facilities and beds	Clinic	CHCs	Mobile Service	District Hospital	Regional Hospital	Provincial Tertiary Hospital	Central Hospital	Specialised Hospital	Private Hospitals	Beds
Public sector facilities (2007) and beds (2005)	411	27	128	33	5	2	0	4		8 431
Private sector facilities and beds (2008)									7	454

## Limpopo

## DC35 Capricorn District Municipality



Capricorn district has a population of close to 1.2 million people. It falls into the 2<sup>nd</sup> lowest socio-economic quintile, with 83.1% of households having access to piped water. Only 5.9% of the population had access to a medical aid scheme in 2007 which is the lowest in the province.

Capricorn had the highest number of public facility beds in Limpopo and PHC expenditure per person increased by R49 in 2007/08 to R256, yet it is one of the lowest spending

districts in SA. The PHC utilisation rate increased to 2.2 visits per person per year in 2007/08, while the nurse clinical workload of 14.2 patients per nurse per day was the 3<sup>rd</sup> lowest in SA. The clinic supervision rate increased from 57.9% to 66.5% in 2007/08 but this means a third of clinics did not get regular supervision in 2007/08, which is inadequate to improve the quality of PHC.

The TB cure rate improved over the last four years to 69.7% in 2006. There was an increase in TB smear conversion rate from 50% in 2006 to 58.4% in 2007 but much more managerial attention is required for TB control.

HIV prevalence appears to be declining, based on both the antenatal survey and routine DHIS data. The HIV testing rate of pregnant mothers has improved to 82.5% in 2007/08. The nevirapine uptake rate of HIV+ve mothers improved to 64.6% but there are problems with the data regarding nevirapine uptake in newborns, which is

probably less than 70% (2006/07 data). However more attention still needs to be given to monitoring of this important HIV prevention programme.

The male condom distribution rate was 11.3 per male per year in 2007/08 and the incidence of STIs increased to 4.6%, although it had shown a declining trend prior to this.

The delivery rate in facilities increased consistently from 57.7% in 2003/04 to 84.9% in 2007/08 and the Caesarean section rate of 10.6% has been the lowest in the province from 2003/04 to 2007/08 (even though it has six district hospitals). The stillbirth and perinatal mortality rates have remained fairly static over the past eight years. The immunisation coverage declined to 74.3% in 2007/08 and the drop out rate worsened from 3.9% to 5.1% in the same time period.

DC35 Capricorn District Municipality		Year					District Rank (1=best)	National value
		2003/04	2004/05	2005/06	2006/07	2007/08	most recent	most recent
Demographic and socio-economic	Population total			1 192 992	1 195 981	1 201 352		47 844 347
	Medical aid coverage (%)			6.4	4.6	5.9	41	14.3
	Access to piped water (%) - (2005-06 GHS, 2007 Comm. Survey)			67.9	76.6	83.1	37	85.8
	Deprivation index - (high value = most deprived)			3.45	3.47	3.44	38	
	Socio-economic quintile - (1=poor, 5=best)			2	2	2		
Input	Non-hospital PHC expenditure per capita - (real 2007/08 prices)			185	207	256	38	302
	% District health services expenditure on District Management			1.4	1.7	3.7		5.1
	% District health services expenditure on District Hospitals			57.1	55.1	52.1		42.7
	Cost per PDE			965	1 063	1 280		1128
Process	Nurse clinical workload		12.7	13.1	14.8	14.2	50	23.7
	Average length of stay (ALOS)	5.9	4.3	4.3	4.8	4.5	31	4.4
	Bed utilisation rate (BUR)	63.7	63.0	67.6	70.6	64.5	29	65.3
	Clinic supervision rate	-	-	-	57.9	66.5	11	48.2
Output	Male condom distribution rate	7.6	8.8	11.0	11.6	11.3	12	11.8
	Immunisation coverage < 1 year	72.4	73.8	77.1	84.1	74.3	44	84.2
	Immunisation drop out rate (DTP1-3)	3.8	5.8	2.2	3.9	5.1	41	3.4
	Caesarean section rate	7.4	8.3	7.7	9.4	10.6		15.6
	Proportion ANC clients tested for HIV	32.6	40.1	58.5	80.6	82.5	30	79.6
	HIV prevalence among ANC clients tested (DHIS)	25.8	23.7	19.6	19.7	17.4	16	24.4
	HIV prevalence among ANC clients tested (survey)	-	-	-	24.2 (21.3-27.0)	19.8 (17.3-22.6)	12	28.3
	Nevirapine uptake rate among newborn babies of HIV+ve women	89.9	97.3	96.8	67.0	101.3	18	102.3
	Nevirapine uptake rate among pregnant HIV+ve women	35.7	50.5	48.9	52.4	64.6	31	76.1
	Utilisation rate	1.8	1.8	1.9	2.1	2.2	31	2.2
Outcome	Incidence of STI treated - new	5.0	4.9	4.2	3.8	4.6	35	4.4
	TB cure rate (2004 - 2006)	48.3	67.8	68.2	69.6		17	62.7
	TB smear conversion rate (2004 - 2007)	50.4	52.3	52.5	50.0	58.4	27	60.5
	TB case load (new Sm+)	-	-	-	-	1 468		135 604
	Diarrhoea incidence under 5 years	215.1	255.9	263.7	277.6	341.7	38	254.0
	Not gaining weight under 5 years rate	0.7	0.6	0.6	0.5	0.5	4	1.3
	Delivery rate in facility	57.7	79.8	83.3	83.8	84.9	21	80.6
Impact	Stillbirth rate	26.1	26.6	23.1	24.7	26.5	44	23.0
	Perinatal mortality rate in facility	38.8	39.1	35.2	38.3	39.7	46	31.1

Number of health facilities and beds	Clinic	CHCs	Mobile Service	District Hospital	Regional Hospital	Provincial Tertiary Hospital	Central Hospital	Specialised Hospital	Private Hospitals	Beds
Public sector facilities (2007) and beds (2005)	88	4	31	6	0	2	0	1		2 566
Private sector facilities and beds (2008)									1	186

## Limpopo

## DC47 Greater Sekhukhune District Municipality

ISRDP



Greater Sekhukhune has just over one million people and is one of the poorest districts in SA, with only 64.6% of households having access to piped water in 2007. Although access to piped water is increasing, the deprivation index of this district appears to be deteriorating. Only 7.8% of the population had access to a medical aid scheme in 2007.

The PHC expenditure per person increased by R46 in 2007/08 to R221 but is the lowest

in Limpopo. The utilisation of public health facilities has remained consistently low since 2000/01 at 1.7 visits per person per year, – the lowest in the province. The nurse clinical workload of 14 patients per nurse per day in 2007/08 was the 2<sup>nd</sup> lowest in the country. The clinic supervision rate of 38.7% was the lowest in the province and means that around three out of five clinics did not receive regular supervision in 2007/08.

The TB cure rate worsened from 54.0% to 48.9% in 2006 and the smear conversion rate is very low at 42.3% in 2007. Given the low level of these indicators there is an urgent need for far greater managerial attention to be given to this priority programme!

The condom distribution rate dropped slightly to 10.1 condoms per man, per year. The incidence of new STI decreased to 3.0% in 2007/08 and remained the lowest in the province since 2003/04. The incidence of children under five not gaining weight (2.5%), is the highest in the province.

The proportion of ANC clients tested for HIV improved by 10.4 percentage points in 2007/08 but is below the national average of 79.6%. The nevirapine uptake rate of HIV+ve mothers improved from 62.5% to 69.8%. However, the nevirapine uptake for newborn babies of HIV+ve mothers fluctuated widely, making interpretation difficult. Greater emphasis needs to be placed on monitoring the data quality of this important HIV prevention programme.

The delivery rate in facilities was 96.7% in 2007/08, which seems unlikely in the context of this district, and the data should be confirmed. The Caesarean section rate has increased steadily since 2003/04 to 13.1% in 2007/08. The immunisation coverage is fairly average at 84.3% in 2007/08 and the drop out rate has declined gradually to around zero although, as for most districts, this indicator does fluctuate quite extensively.

DC47 Greater Sekhukhune District Municipality		Year					District Rank (1=best)	National value
		2003/04	2004/05	2005/06	2006/07	2007/08	(1=best) most recent	most recent
Demographic and socio-economic	Population total			1 033 890	1 035 885	1 036 083		47 844 347
	Medical aid coverage (%)			5.0	5.7	7.8	36	14.3
	Access to piped water (%) - (2005-06 GHS, 2007 Comm. Survey)			58.5	60.7	64.6	45	85.8
	Deprivation index - (high value = most deprived)			3.87	4.11	4.16	47	
	Socio-economic quintile - (1=poor, 5=best)			1	1	1		
Input	Non-hospital PHC expenditure per capita - (real 2007/08 prices)			137	175	221	46	302
	% District health services expenditure on District Management			4.1	4.7	7.7		5.1
	% District health services expenditure on District Hospitals			55.1	52.0	49.7		42.7
	Cost per PDE			856	1 115	1 231		1128
Process	Nurse clinical workload		13.8	13.7	14.3	14.0	51	23.7
	Average length of stay (ALOS)	4.5	3.5	4.0	4.3	4.6	33	4.4
	Bed utilisation rate (BUR)	51.2	58.8	67.6	64.6	64.2	30	65.3
	Clinic supervision rate	-	-	-	34.8	38.7	37	48.2
Output	Male condom distribution rate	4.7	5.1	6.7	10.6	10.1	17	11.8
	Immunisation coverage < 1 year	66.4	69.8	83.8	96.1	84.3	27	84.2
	Immunisation drop out rate (DTP1-3)	8.1	9.6	4.0	4.2	-0.2	10	3.4
	Caesarean section rate	9.0	9.2	10.3	11.4	13.1		15.6
	Proportion ANC clients tested for HIV	15.6	24.3	45.8	66.5	76.9	38	79.6
	HIV prevalence among ANC clients tested (DHIS)	17.3	14.2	16.2	15.5	14.7	10	24.4
	HIV prevalence among ANC clients tested (survey)	-	-	-	16.1 (13.5-18.6)	21.4 (18.6-24.5)	13	28.3
	Nevirapine uptake rate among newborn babies of HIV+ve women	98.5	85.6	95.8	51.3	100.4	20	102.3
	Nevirapine uptake rate among pregnant HIV+ve women	38.0	47.2	60.0	62.5	69.8	27	76.1
Utilisation rate	1.5	1.5	1.5	1.7	1.7	43	2.2	
Outcome	Incidence of STI treated - new	3.5	3.3	3.3	3.6	3.0	15	4.4
	TB cure rate (2004 - 2006)	49.1	54.8	54.0	48.9		44	62.7
	TB smear conversion rate (2004 - 2007)	51.6	53.7	40.1	41.4	42.3	49	60.5
	TB case load (new Sm+)	-	-	-	-	1 589		135 604
	Diarrhoea incidence under 5 years	122.0	155.4	194.7	219.4	330.0	35	254.0
	Not gaining weight under 5 years rate	2.2	2.2	2.2	2.4	2.5	41	1.3
	Delivery rate in facility	63.1	91.5	92.0	99.2	96.7	3	80.6
Impact	Stillbirth rate	29.7	25.0	24.8	24.8	26.4	43	23.0
	Perinatal mortality rate in facility	46.7	37.4	36.7	38.9	37.7	42	31.1

Number of health facilities and beds	Clinic	CHCs	Mobile Service	District Hospital	Regional Hospital	Provincial Tertiary Hospital	Central Hospital	Specialised Hospital	Private Hospitals	Beds
Public sector facilities (2007) and beds (2005)	72	6	19	6	1	0	0	0	0	1 402
Private sector facilities and beds (2008)									0	0

## Limpopo



Mopani District has about 1.1 million people of which 88.1% of households had access to piped water in 2007. The PHC expenditure increased to R290 per person and the utilisation rate decreased slightly to 3.0 visits per person per year in 2007/08. Only 2% of district health services expenditure was spent on district management in 2007/08.

The nurse clinical workload dropped to 20 patients per nurse per day in 2007/08 and

the clinic supervision rate improved to 63.4%, implying that about a third of the clinics did not receive regular supervision during 2007/08. This is inadequate to improve the quality of PHC. The bed utilisation rate has fluctuated between 64% and 69% over the last five years.

There was a steady increase in the TB cure rate from 47.0% in 2003 to 62.3% in 2006 and a corresponding increase in the smear conversion rate from 39.15 in 2004 to 64.9% in 2007. There is however still much to be done to improve the TB control programme.

The incidence of new STIs treated decreased steadily from 10.5% in 2003/04 to 6.6% in 2007/08 while the male condom distribution rate increased from 11.5 to 17.3 condoms per man, per year, and is the 2<sup>nd</sup> highest in SA.

The proportion of ANC clients tested for HIV increased to be close to the national

## DC33 Mopani District

average in 2007/08. The nevirapine uptake rate of HIV+ve mothers improved to 62.5% in 2007/08, but the data on the uptake rate of newborn babies fluctuated over the past five years making interpretation difficult. Greater emphasis needs to be given to the monitoring of the data quality of this important HIV prevention programme.

The stillbirth and perinatal mortality rates remained below the national averages in 2007/08 and the delivery rate in facilities showed a sustained increase since 2003/04 to 84.3% in 2007/08. The Caesarean section rate decreased slightly to 17.4% in 2007/08 after increasing steadily for the previous 6 years.

The immunisation coverage decreased from 79.5% in 2006/07 to 72.3% in 2007/08, the lowest in the province and the 7<sup>th</sup> lowest in the country.

DC33 Mopani District Municipality		Year					District Rank (1=best)	National value	
		2003/04	2004/05	2005/06	2006/07	2007/08	most recent	most recent	
Demographic and socio-economic	Population total			985 568	1 108 082	1 116 652		47 844 347	
	Medical aid coverage (%)			6.4	8.9	7.6	37	14.3	
	Access to piped water (%) - (2005-06 GHS, 2007 Comm. Survey)			78.6	84.7	88.1	33	85.8	
	Deprivation index - (high value = most deprived)			3.61	3.63	3.39	36		
	Socio-economic quintile - (1=poor, 5=best)			1	2	2			
Input	Non-hospital PHC expenditure per capita - (real 2007/08 prices)			245	253	290	27	302	
	% District health services expenditure on District Management			4.8	1.5	2.0		5.1	
	% District health services expenditure on District Hospitals			51.3	52.6	51.3		42.7	
	Cost per PDE			927	939	1 145		1128	
Process	Nurse clinical workload		18.5	20.7	21.7	20.0	38	23.7	
	Average length of stay (ALOS)	4.5	4.0	3.8	4.0	3.8	21	4.4	
	Bed utilisation rate (BUR)	63.4	66.8	64.6	68.6	64.1	31	65.3	
Output	Clinic supervision rate	-	-	-	53.9	63.4	14	48.2	
	Male condom distribution rate	11.5	13.9	15.5	15.8	17.3	2	11.8	
	Immunisation coverage < 1 year	76.9	70.5	76.3	79.5	72.3	46	84.2	
	Immunisation drop out rate (DTP1-3)	5.0	6.9	3.8	3.4	0.6	12	3.4	
	Caesarean section rate	13.0	13.8	15.2	18.0	17.4		15.6	
	Proportion ANC clients tested for HIV	30.8	43.8	37.1	62.3	79.0	36	79.6	
	HIV prevalence among ANC clients tested (DHIS)	29.5	22.5	18.9	20.0	20.3	21	24.4	
	HIV prevalence among ANC clients tested (survey)	-	-	-	24.7 (21.6-27.9)	23.8 (20.6-27.3)	17	28.3	
	Nevirapine uptake rate among newborn babies of HIV+ve women	95.0	98.0	96.6	67.4	99.7	25	102.3	
	Nevirapine uptake rate among pregnant HIV+ve women	36.7	35.5	50.7	55.7	62.5	34	76.1	
Outcome	Utilisation rate	3.2	3.1	3.2	3.3	3.0	10	2.2	
	Incidence of STI treated - new	10.5	9.2	7.6	7.0	6.6	43	4.4	
	TB cure rate (2004 - 2006)	47	54.1	58.9	62.3		35	62.7	
	TB smear conversion rate (2004 - 2007)	54.1	39.1	43.5	58.0	64.9	17	60.5	
	TB case load (new Sm+)	-	-	-	-	1 530		135 604	
	Diarrhoea incidence under 5 years	464.9	450.4	447.8	410.9	412.0	44	254.0	
	Not gaining weight under 5 years rate	0.8	0.7	0.7	0.7	0.7	8	1.3	
	Delivery rate in facility	66.4	73.4	79.9	81.0	84.2	24	80.6	
	Impact	Stillbirth rate	21.9	16.6	20.2	23.1	19.0	11	23.0
		Perinatal mortality rate in facility	32.5	28.6	29.4	32.5	28.3	17	31.1

Number of health facilities and beds	Clinic	CHCs	Mobile Service	District Hospital	Regional Hospital	Provincial Tertiary Hospital	Central Hospital	Specialised Hospital	Private Hospitals	Beds
Public sector facilities (2007) and beds (2005)	86	7	26	8	1	0	0	1		1 619
Private sector facilities and beds (2008)									1	64

## Limpopo

## DC34 Vhembe District Municipality



Vhembe district, with 1.3 million people, has the highest population in Limpopo and falls into the 2<sup>nd</sup> socio-economic quintile. Household access to piped water increased to 92% in 2007, the highest in the province, although this estimate (Community Survey) is much higher than findings from other surveys. The PHC expenditure increased by R84 per person to R301 in 2007/08, close to the national average.

The utilisation of public health facilities

decreased slightly to 3.6 visits per person per year in 2007/08 and is the 5<sup>th</sup> highest in country. The nurse clinical workload dropped to 22.7 patients per nurse per day in 2007/08, which is below the national average but remains the highest in Limpopo. The bed utilisation rate, highest in the province, also decreased to 66.8% in 2007/08.

It is concerning to see that the clinic supervision rate dropped to 63.1% in 2007/08, although it was still substantially higher than the national average.

The TB cure rate had not improved since 2005, but was the highest in the province in 2006 at 72%. The smear conversion rate continued to improve to 80.7% in 2007 and was ranked 4<sup>th</sup> highest in the country. This is a very good performance for a poor district but the cure rate needs to show regular improvements. The male condom distribution rate of 14.5 condoms per man, per year, was 6<sup>th</sup> best in SA in 2007/08; however

the district had the highest incidence of STIs (8.0%) in the country.

The PMTCT indicators were affected by significant data irregularities in the past year, in particular for the proportion of antenatal clients tested for HIV. Likewise, the data on nevirapine uptake rate in HIV+ve mothers and their babies showed fluctuation and has made interpretation difficult. Much more attention needs to be given to the monitoring and data quality of this programme.

The stillbirth and perinatal mortality rates of 16.1 and 24.6 per 1000 births respectively, ranked Vhembe best in the province in 2007/08, as in most years prior to this. The Caesarean section rate of 23.7% was the highest in Limpopo, and is more than double that of Capricorn.

The immunisation coverage in this district continued to be the best in the province despite a decrease from 87.4% to 84.9% in 2007/08.

DC34 Vhembe District Municipality		Year					District Rank (1=best)	National value
		2003/04	2004/05	2005/06	2006/07	2007/08	(1=best) most recent	most recent
Demographic and socio-economic	Population total			1 282 063	1 293 104	1 305 619		47 844 347
	Medical aid coverage (%)			6.5	5.6	6.4	40	14.3
	Access to piped water (%) - (2005-06 GHS, 2007 Comm. Survey)			75.4	74.1	92.0	25	85.8
	Deprivation index - (high value = most deprived)			3.36	3.67	3.56	40	
	Socio-economic quintile - (1=poor, 5=best)			2	2	2		
Input	Non-hospital PHC expenditure per capita - (real 2007/08 prices)			245	217	301	25	302
	% District health services expenditure on District Management			3.6	1.5	2.5		5.1
	% District health services expenditure on District Hospitals			54.9	57.9	53.0		42.7
	Cost per PDE			866	994	1 167		1128
Process	Nurse clinical workload		25.2	25.7	24.8	22.7	28	23.7
	Average length of stay (ALOS)	6.5	5.6	5.0	4.6	4.9	39	4.4
	Bed utilisation rate (BUR)	69.2	66.3	70.3	69.4	66.8	24	65.3
	Clinic supervision rate	-	-	-	75.7	63.1	16	48.2
Output	Male condom distribution rate	9.1	9.5	12.7	14.8	14.5	6	11.8
	Immunisation coverage < 1 year	83.1	82.9	86.8	87.4	84.9	25	84.2
	Immunisation drop out rate (DTP1-3)	1.5	6.1	3.9	3.0	3.3	25	3.4
	Caesarean section rate	19.7	22.5	23.6	25.2	23.7		15.6
	Proportion ANC clients tested for HIV	22.7	36.8	48.4	86.6	120.0	1	79.6
	HIV prevalence among ANC clients tested (DHIS)	16.4	14.6	13.4	12.5	11.3	9	24.4
	HIV prevalence among ANC clients tested (survey)	-	-	-	14.1 (11.9-16.4)	15.2 (13.0-17.7)	8	28.3
	Nevirapine uptake rate among newborn babies of HIV+ve women	92.5	99.7	97.7	63.3	99.0	30	102.3
	Nevirapine uptake rate among pregnant HIV+ve women	37.3	42.9	57.7	57.5	62.9	33	76.1
	Utilisation rate	3.6	3.8	3.9	3.9	3.6	5	2.2
Outcome	Incidence of STI treated - new	10.4	9.4	9.6	8.5	8.0	52	4.4
	TB cure rate (2004 - 2006)	63.4	75.1	72.0	72.4		12	62.7
	TB smear conversion rate (2004 - 2007)	47.9	65.0	73.1	76.8	80.7	4	60.5
	TB case load (new Sm+)	-	-	-	-	1 673		135 604
	Diarrhoea incidence under 5 years	295.0	417.0	432.4	470.3	502.0	48	254.0
	Not gaining weight under 5 years rate	0.6	0.5	0.5	0.5	0.5	3	1.3
	Delivery rate in facility	74.0	81.4	84.0	84.8	85.1	20	80.6
Impact	Stillbirth rate	16.0	16.2	15.2	15.9	16.1	6	23.0
	Perinatal mortality rate in facility	27.9	25.7	22.8	23.3	24.6	8	31.1

Number of health facilities and beds	Clinic	CHCs	Mobile Service	District Hospital	Regional Hospital	Provincial Tertiary Hospital	Central Hospital	Specialised Hospital	Private Hospitals	Beds
Public sector facilities (2007) and beds (2005)	113	8	21	7	1	0	0	1	0	1 954
Private sector facilities and beds (2008)									0	0

## Limpopo



Waterberg has the smallest population and is the least deprived of all the districts in Limpopo. In 2007 the percentage of households with access to piped water was 87.9% and 15.8% of the population had access to a medical aid scheme, more than double the provincial average of 7.3%.

Waterberg had the least number of public facility beds in Limpopo but with the highest cost per PDE for district hospitals (R1461) and the

## DC36 Waterberg District Municipality

the lowest bed utilisation rate (59.2%). The average length of stay in district hospitals decreased slightly to 4.0 days in 2007/08.

The PHC expenditure increased to R303 per person in 2007/08 and is the highest in the province. The nurse clinical workload has remained at the very low level of around 12 patients per nurse per day which is the lowest in the country. The PHC utilisation rate remained static at 1.8 visits per person per year and is half the rate of Vhembe. The clinic supervision rate was 56.9%, meaning that nearly half of the clinics did not receive regular supervision in 2007/08.

There was slight improvement in TB cure and smear conversion rates to 44.6% in 2006 and 40.5% in 2007 respectively, but both values remained among the lowest in SA. Waterberg appears to have the highest incidence of new Sm+ TB and the highest prevalence of HIV in Limpopo. The incidence of STIs steadily declined since 2004, and the

condom distribution rate decreased slightly to 9.3 per male per year in 2007/08.

The PMTCT indicators for Waterberg were affected by data irregularities and show the proportion of ANC clients tested for HIV increasing to over 100% in the past year. The nevirapine uptake for HIV+ve mothers is less than 60%, and the rate for babies fluctuated making interpretation difficult.

The delivery rate in facility decreased slightly to 83% in 2007/08 but is still higher than it was in 2004/05. The Caesarean section rate was 14.8%. Both the stillbirth and perinatal mortality rates decreased in 2007/08 and are close to the national average. The immunisation coverage of 74.7% was the 2<sup>nd</sup> lowest in the province in 2007/08, as was the drop out rate of 4.4%.

DC36 Waterberg District Municipality		Year					District Rank (1=best)	National value
		2003/04	2004/05	2005/06	2006/07	2007/08	most recent	most recent
Demographic and socio-economic	Population total			645 477	654 057	663 303		47 844 347
	Medical aid coverage (%)			13.9	14.9	15.8	15	14.3
	Access to piped water (%) - (2005-06 GHS, 2007 Comm. Survey)			81.1	83.6	87.9	35	85.8
	Deprivation index - (high value = most deprived)			2.39	2.26	2.72	29	
	Socio-economic quintile - (1=poor, 5=best)			3	3	3		
Input	Non-hospital PHC expenditure per capita - (real 2007/08 prices)			210	220	303	24	302
	% District health services expenditure on District Management			4.7	5.7	6.5		5.1
	% District health services expenditure on District Hospitals			60.4	59.1	54.5		42.7
	Cost per PDE			1 136	1 276	1 461		1128
Process	Nurse clinical workload		12.2	12.7	12.9	12.5	52	23.7
	Average length of stay (ALOS)	4.1	4.2	4.2	4.3	4.0	26	4.4
	Bed utilisation rate (BUR)	52.8	55.8	59.8	60.5	59.2	38	65.3
	Clinic supervision rate	-	-	-	54.0	56.9	20	48.2
Output	Male condom distribution rate	12.2	9.9	9.9	10.9	9.3	20	11.8
	Immunisation coverage < 1 year	72.3	71.3	66.6	73.0	74.7	42	84.2
	Immunisation drop out rate (DTP1-3)	4.5	10.0	6.1	5.9	4.4	32	3.4
	Caesarean section rate	12.8	13.8	13.5	14.0	14.8		15.6
	Proportion ANC clients tested for HIV	26.3	39.6	50.6	85.1	108.3	4	79.6
	HIV prevalence among ANC clients tested (DHIS)	17.4	20.9	20.4	22.8	21.6	24	24.4
	HIV prevalence among ANC clients tested (survey)	-	-	-	27.5 (23.7-31.3)	25.4 (21.6-29.6)	19	28.3
	Nevirapine uptake rate among newborn babies of HIV+ve women	98.3	91.2	99.1	61.6	99.7	24	102.3
	Nevirapine uptake rate among pregnant HIV+ve women	59.9	55.9	61.9	60.7	55.4	44	76.1
Utilisation rate	2.2	1.8	1.9	1.8	1.8	41	2.2	
Outcome	Incidence of STI treated - new	6.7	6.3	5.8	5.2	4.8	36	4.4
	TB cure rate (2004 - 2006)	38	78.7	38.3	44.6		48	62.7
	TB smear conversion rate (2004 - 2007)	45.3	70.6	73.4	26.1	40.5	51	60.5
	TB case load (new Sm+)	-	-	-	-	1 474		135 604
	Diarrhoea incidence under 5 years	201.3	238.4	240.0	258.2	326.8	34	254.0
	Not gaining weight under 5 years rate	2.1	1.4	1.4	1.3	1.1	19	1.3
	Delivery rate in facility	66.7	76.1	81.1	84.9	83.0	27	80.6
Impact	Stillbirth rate	30.6	27.5	20.8	23.5	21.5	18	23.0
	Perinatal mortality rate in facility	42.2	37.9	34.4	39.8	32.7	31	31.1

Number of health facilities and beds	Clinic	CHCs	Mobile Service	District Hospital	Regional Hospital	Provincial Tertiary Hospital	Central Hospital	Specialised Hospital	Private Hospitals	Beds
Public sector facilities (2007) and beds (2005)	52	2	31	6	2	0	0	1		890
Private sector facilities and beds (2008)									5	204