

Mpumalanga Province

Jackie Smith



Mpumalanga province had a population of just over 3.6 million people in 2007 with 91.1% of the households having access to piped water, which is above the national average of 85.8%. Over 3.1 million people (87.8%) had no access to a medical aid scheme in 2007.

The bed utilisation rate in district hospitals has increased by 5.9 percentage points to 70.2% in 2007/08, ranking it as the second highest province in the country, while the average length of stay in a district hospital increased slightly to 4.6 days. The expenditure in district hospitals increased slightly with the cost per PDE rising by R29 to R1116 in 2007/08, however, with the cost per PDE in Nkangala district being much higher than in the other two districts in Mpumalanga.

The expenditure on PHC rose steadily over the past three years to R237 per capita in 2007/08 and is no longer the lowest in the country. PHC expenditure has on average, shown a 15.8% real annual growth between 2005/6 and 2007/08.

Nurse clinical workload has continued its downward trend from 26.1 patients per nurse per day in 2004/05 to 19.6 in 2007/08. This is of concern and requires further investigation to determine whether this is due to poor data or caused by a decrease in the PHC utilisation rate from 2.1 in 2006/07 to 2.0 in 2007/08. The clinic supervision rate at 26.8% was the second lowest in the country in 2007/08. Clinic supervision urgently needs to be prioritised in all the districts in this province.

The TB cure rate has continued to rise steadily, mirrored by the smear conversion rate. This is pleasing to see, and indicates renewed commitment to the TB control programme. It should be noted however that the cure rate and smear conversion rate are both below the national average.

The proportion of ANC clients tested for HIV has risen significantly since 2003/04 to 74.6% in 2007/08. There is a marked difference between Gert Sibande and Nkangala of over 10 percentage points in the antenatal HIV prevalence. This trend is reflected in both the DHIS data and the antenatal survey, although the estimated values differ between the sources. The nevirapine uptake rate for HIV+ve pregnant women increased steadily from

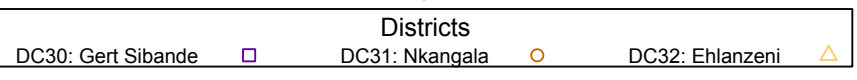
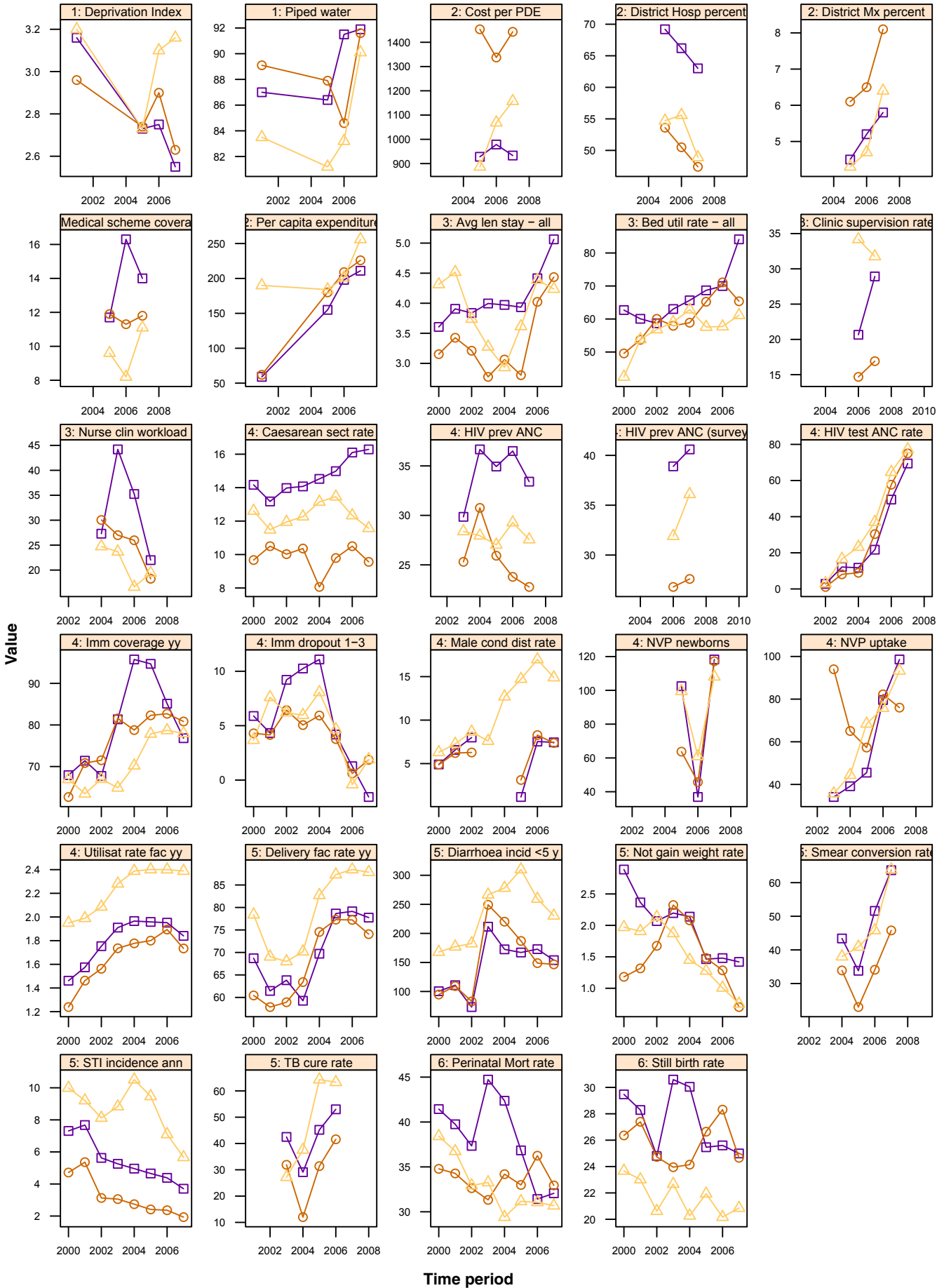
47% in 2004/05 to 90.8% in 2007/08, but the data for the uptake in babies over this period remains inconsistent and difficult to interpret.

The incidence of new STIs has decreased from 6.1% in 2003/04 to 4.0% in 2007/08 which is encouraging, and this despite a slight decrease in the male condom distribution rate in the last year. It is interesting to note that Ehlanzeni has a condom distribution rate that is double that of the other two districts. Distribution of condoms is an important tool in HIV prevention and should therefore be prioritised by HIV programme managers.

The Caesarean section rate has remained at an average of between 12% and 13% over the last few years but differed widely between the districts in 2007/08, with Nkangala at one end of the scale with 9.6% of women receiving Caesarean sections and Gert Sibande at the other end at 16.3%.

Of concern is the immunisation coverage rate of 78.5% which remains under the national average (84.2%) and has decreased since 2005/06. The child health programme needs to be reviewed and strategies put in place to decrease the drop out rate and increase the immunisation rate of under one year olds to above the national average.

Annual indicators for districts in Mpumalanga (MP)



MP Mpumalanga		Year					District Rank (1=best) most recent	National value most recent
		2003/04	2004/05	2005/06	2006/07	2007/08		
Demographic and socio-economic	Population total			2 954 482	3 596 624	3 619 283		47 844 347
	Medical aid coverage (%)			11.1	11.7	12.2	-	14.3
	Access to piped water (%) - (2005-06 GHS, 2007 Comm. Survey)			83.9	86.1	91.1	-	85.8
	Deprivation index - (high value = most deprived)			-	-	-	-	
	Socio-economic quintile - (1=poor, 5=best)			-	-	-	-	
Input	Non-hospital PHC expenditure per capita - (real 2007/08 prices)			176	204	237	-	302
	% District health services expenditure on District Management			4.9	5.3	6.7		5.1
	% District health services expenditure on District Hospitals			58.7	57.3	52.6		42.7
	Cost per PDE			973	1 086	1 116		1128
Process	Nurse clinical workload		26.1	27.5	21.1	19.6	-	23.7
	Average length of stay (ALOS)	3.4	3.3	3.5	4.3	4.6	-	4.4
	Bed utilisation rate (BUR)	60.4	63.1	62.8	64.3	70.2	-	65.3
	Clinic supervision rate	-	-	-	24.8	26.8	-	48.2
Output	Male condom distribution rate	7.6	12.7	10.8	11.7	10.6	-	11.8
	Immunisation coverage < 1 year	73.9	79.2	83.4	81.4	78.5	-	84.2
	Immunisation drop out rate (DTP1-3)	6.8	8.2	4.3	0.3	1.0	-	3.4
	Caesarean section rate	12.4	12.4	13.1	13.0	12.5		15.6
	Proportion ANC clients tested for HIV	12.6	15.7	31.0	58.7	74.6	-	79.6
	HIV prevalence among ANC clients tested (DHIS)	28.1	30.1	28.2	29.3	27.6	-	24.4
	HIV prevalence among ANC clients tested (survey)	-	-	-	32.1 (29.8-34.4)	32.0 (29.2-34.9)	-	28.3
	Nevirapine uptake rate among newborn babies of HIV+ve women	-	-	95.7	51.2	112.5	-	102.3
	Nevirapine uptake rate among pregnant HIV+ve women	46.6	47.0	60.2	78.3	90.8	-	76.1
Utilisation rate	2.0	2.1	2.1	2.1	2.0	-	2.2	
Outcome	Incidence of STI treated - new	6.1	6.6	6.0	4.9	4.0	-	4.4
	TB cure rate (2004 - 2006)	43.7	32	51.8	56.1		-	62.7
	TB smear conversion rate (2004 - 2007)	50.8	34.2	35.6	44.4	57.8	-	60.5
	TB case load (new Sm+)	-	-	-	-	9 065		135 604
	Diarrhoea incidence under 5 years	247.7	234.5	238.2	205.6	187.0	-	254.0
	Not gaining weight under 5 years rate	2.1	1.8	1.4	1.2	0.9	-	1.3
Impact	Delivery rate in facility	65.4	77.1	82.3	82.9	81.4	-	80.6
	Stillbirth rate	24.9	23.6	24.0	23.6	22.8	-	23.0
	Perinatal mortality rate in facility	35.4	33.7	33.0	32.5	31.6	-	31.1

Number of health facilities and beds	Clinic	CHCs	Mobile Service	District Hospital	Regional Hospital	Provincial Tertiary Hospital	Central Hospital	Specialised Hospital	Private Hospitals	Beds
Public sector facilities (2007) and beds (2005)	231	36	76	23	3	2	0	6		5 040
Private sector facilities and beds (2008)									8	1 058

Mpumalanga

DC32 Ehlanzeni District Municipality



Ehlanzeni has a population of over 1.5 million people, 90.1% of whom had access to piped water in 2007 and 11.1% had access to a medical aid scheme, the lowest of the three districts in the province.

The bed utilisation rate, while still below the national average, has increased to 61.2% and the average length of stay (4.2 days) has decreased to below the national average of 4.4 days. PHC expenditure increased by R55 per capita to R256, and although it is

the highest in the province, it still remains below the national average of R302.

The nurse clinical workload has increased to 19.4 patients per day in 2007/08, although the real value is uncertain due to several missing denominators in the data. The clinic supervision rate has decreased to 31.8% in 2007/08. This is extremely disturbing as, although it is the highest in the province, it has dropped fourteen places in the district rankings from an already extremely low baseline. It is clear that clinic supervision is not a priority in this district.

The TB cure rate has dropped by 1 percentage point in 2006 after its impressive rise in 2005. The smear conversion rate has continued to rise to 63.9% in 2007 and it is hoped that this will be mirrored in the 2007 cure rate. There is still much scope for improvement in the TB programme, though it should be noted that both the cure rate and the smear conversion rates are above the national average.

The incidence of STIs has dropped from 7.1% in 2006/07 to 5.7% in 2007/08 and the male condom distribution rate, although ranked 5th in the country, has dropped by 2.1 to 14.9 condoms per man, per year, in 2007/08. This trend should be monitored to ensure it does not drop further.

The Caesarean section rate dropped slightly to 11.6% in 2007/08, while the stillbirth and perinatal mortality rates in facility have remained at around 21 and 31 per 1000 births respectively.

DC32 Ehlanzeni District Municipality		Year					District Rank (1=best)	National value
		2003/04	2004/05	2005/06	2006/07	2007/08	most recent	most recent
Demographic and socio-economic	Population total			952 278	1 577 455	1 589 953		47 844 347
	Medical aid coverage (%)			9.6	8.2	11.1	31	14.3
	Access to piped water (%) - (2005-06 GHS, 2007 Comm. Survey)			81.2	83.2	90.1	30	85.8
	Deprivation index - (high value = most deprived)			2.73	3.10	3.16	33	
	Socio-economic quintile - (1=poor, 5=best)			3	3	2		
Input	Non-hospital PHC expenditure per capita - (real 2007/08 prices)			184	201	256	39	302
	% District health services expenditure on District Management			4.3	4.7	6.4		5.1
	% District health services expenditure on District Hospitals			54.7	55.6	48.9		42.7
	Cost per PDE			887	1 069	1 157		1128
Process	Nurse clinical workload		24.7	23.7	16.6	19.4	40	23.7
	Average length of stay (ALOS)	3.3	2.9	3.6	4.4	4.2	28	4.4
	Bed utilisation rate (BUR)	59.1	62.8	57.6	57.7	61.2	36	65.3
	Clinic supervision rate	-	-	-	34.2	31.8	43	48.2
Output	Male condom distribution rate	7.6	12.7	14.7	17.0	14.9	5	11.8
	Immunisation coverage < 1 year	64.9	70.2	77.9	78.7	78.0	37	84.2
	Immunisation drop out rate (DTP1-3)	6.0	8.1	4.7	-0.4	1.9	18	3.4
	Caesarean section rate	12.3	13.1	13.5	12.3	11.6		15.6
	Proportion ANC clients tested for HIV	16.6	23.2	37.0	64.7	77.2	37	79.6
	HIV prevalence among ANC clients tested (DHIS)	28.4	27.9	27.0	29.3	27.6	38	24.4
	HIV prevalence among ANC clients tested (survey)	-	-	-	31.9 (29.1-34.8)	36.1 (33.2-39.1)	43	28.3
	Nevirapine uptake rate among newborn babies of HIV+ve women	-	-	99.5	60.9	108.1	6	102.3
	Nevirapine uptake rate among pregnant HIV+ve women	35.8	44.4	68.4	75.8	93.3	9	76.1
	Utilisation rate	2.3	2.4	2.4	2.4	2.4	23	2.2
Outcome	Incidence of STI treated - new	8.8	10.5	9.5	7.1	5.7	39	4.4
	TB cure rate (2004 - 2006)	27.2	37.6	64.3	63.3		32	62.7
	TB smear conversion rate (2004 - 2007)	58.3	38.0	40.9	45.8	63.9	20	60.5
	TB case load (new Sm+)	-	-	-	-	4 590		135 604
	Diarrhoea incidence under 5 years	266.7	278.1	309.9	259.4	230.4	26	254.0
	Not gaining weight under 5 years rate	1.9	1.5	1.3	1.0	0.8	10	1.3
	Delivery rate in facility	70.2	82.7	87.3	88.4	87.9	11	80.6
Impact	Stillbirth rate	22.7	20.3	21.9	20.2	20.9	16	23.0
	Perinatal mortality rate in facility	33.3	29.4	31.2	31.1	30.7	23	31.1

Number of health facilities and beds	Clinic	CHCs	Mobile Service	District Hospital	Regional Hospital	Provincial Tertiary Hospital	Central Hospital	Specialised Hospital	Private Hospitals	Beds
Public sector facilities (2007) and beds (2005)	106	12	28	8	2	1	0	2		2 811
Private sector facilities and beds (2008)									2	270

Mpumalanga

DC30 Gert Sibande Municipality



Gert Sibande district is geographically the largest district in Mpumalanga yet had the smallest population (915 452) in the province in 2007. Close on 92% of the population had access to piped water in 2007 and medical aid coverage decreased to 14%, which is close to the national average of 14.3%.

The bed utilisation rate has increased by 14.1 percentage points to 84.1%, but it was accompanied by an increase in average

length of stay from 4.4 days in 2006/07 to 5.1 in 2007/08.

PHC expenditure at R211 per capita, has increased fractionally in 2007/08 and remains just over two thirds (69.8%) of the national average of R302 per capita. The PHC utilisation rate declined to 1.8 visits per person per year. This is cause for concern, in a country where policy states that PHC is the first point of contact in the public health system. Less than one third of the clinics were regularly supervised in 2007/08, which is a too low to ensure continuous improvement of quality in PHC facilities.

The TB cure rate continued its upward trend, as did the smear conversion rate. Further improvement should be encouraged as this district has some way to go before it reaches the national targets.

The proportion of ANC clients tested for HIV increased from 49.5% in 2006/07 to 69.4%

in 2007/08, below the national average of 79.6%. Gert Sibande had the highest HIV prevalence in Mpumalanga in 2007/08. Almost 99% of HIV+ve pregnant women received nevirapine, but the data for the uptake amongst babies continues to fluctuate widely, indicating poor data quality. This programme should receive priority attention from the district management.

The incidence of new STIs decreased from 4.4% in 2006/07 to 3.7% in 2007/08, while the male condom distribution rate decreased fractionally. The delivery rate in facilities dropped slightly to 77.7% in 2007/08 and while the Caesarean section rate shows an upward trend over the last five years from 14.1% in 2003/04 to 16.3% in 2007/08.

DC30 Gert Sibande District Municipality		Year					District Rank (1=best)	National value
		2003/04	2004/05	2005/06	2006/07	2007/08	most recent	most recent
Demographic and socio-economic	Population total			905 327	911 957	915 452		47 844 347
	Medical aid coverage (%)			11.7	16.3	14.0	24	14.3
	Access to piped water (%) - (2005-06 GHS, 2007 Comm. Survey)			86.4	91.5	91.9	26	85.8
	Deprivation index - (high value = most deprived)			2.73	2.75	2.55	26	
	Socio-economic quintile - (1=poor, 5=best)			3	3	3		
Input	Non-hospital PHC expenditure per capita - (real 2007/08 prices)			155	198	211	48	302
	% District health services expenditure on District Management			4.5	5.2	5.8		5.1
	% District health services expenditure on District Hospitals			69.2	66.2	63.0		42.7
	Cost per PDE			928	979	933		1128
Process	Nurse clinical workload		27.3	44.2	35.2	22.0	31	23.7
	Average length of stay (ALOS)	4.0	4.0	3.9	4.4	5.1	40	4.4
	Bed utilisation rate (BUR)	63.0	65.6	68.7	70.0	84.1	3	65.3
	Clinic supervision rate	-	-	-	20.7	28.9	45	48.2
Output	Male condom distribution rate	0.0	0.0	1.2	7.5	7.4	30	11.8
	Immunisation coverage < 1 year	81.4	95.7	94.7	85.1	76.8	38	84.2
	Immunisation drop out rate (DTP1-3)	10.3	11.1	4.2	1.3	-1.6	5	3.4
	Caesarean section rate	14.1	14.5	15.0	16.1	16.3		15.6
	Proportion ANC clients tested for HIV	12.1	11.7	21.7	49.5	69.4	44	79.6
	HIV prevalence among ANC clients tested (DHIS)	29.9	36.7	34.9	36.5	33.4	49	24.4
	HIV prevalence among ANC clients tested (survey)	-	-	-	38.9 (34.7-43.0)	40.6 (36.5-44.8)	49	28.3
	Nevirapine uptake rate among newborn babies of HIV+ve women	-	-	102.5	36.9	118.3	3	102.3
	Nevirapine uptake rate among pregnant HIV+ve women	34.1	39.2	45.5	79.6	98.6	6	76.1
Utilisation rate	1.9	2.0	2.0	2.0	1.8	40	2.2	
Outcome	Incidence of STI treated - new	5.3	5.0	4.7	4.4	3.7	24	4.4
	TB cure rate (2004 - 2006)	42.5	29.1	45.2	53.0		41	62.7
	TB smear conversion rate (2004 - 2007)	39.8	43.4	33.8	51.6	63.7	22	60.5
	TB case load (new Sm+)	-	-	-	-	2 201		135 604
	Diarrhoea incidence under 5 years	211.6	172.5	167.1	172.9	153.9	12	254.0
	Not gaining weight under 5 years rate	2.2	2.1	1.5	1.5	1.4	29	1.3
	Delivery rate in facility	59.3	69.7	78.6	79.1	77.7	31	80.6
Impact	Stillbirth rate	30.6	30.0	25.5	25.6	25.0	36	23.0
	Perinatal mortality rate in facility	44.7	42.4	36.8	31.4	32.1	26	31.1

Number of health facilities and beds	Clinic	CHCs	Mobile Service	District Hospital	Regional Hospital	Provincial Tertiary Hospital	Central Hospital	Specialised Hospital	Private Hospitals	Beds
Public sector facilities (2007) and beds (2005)	60	9	27	8	1	0	0	3		1 350
Private sector facilities and beds (2008)									3	285

Mpumalanga

DC31 Nkangala District Municipality



Nkangala district had a population of over a million people in 2007, 91.6% of which had access to piped water. The district has an average socio-economic status, with 88.2% of the population having no access to a medical aid scheme in 2007.

The average cost per patient day equivalent for district hospitals rose to R1443 in 2007/08 and the average length of stay increased to 4.4 days, equal to the national average. The PHC expenditure increased to

R226 per capita in 2007/08, however it is of concern that it has been consistently lower than the national average in the last three years and remains one of the lowest in the country.

The utilisation rate has increased, except for the most recent year (probably due to the strike) but is very low at 1.7 visits per person per year. This needs urgent investigation to determine why clinic attendance remains so far below the national average in a district where a large proportion of the population relies on the public health system. The clinic supervision rate of 16.9% is the 5th lowest in the country and needs urgent attention.

Although the TB cure rate has improved by 10.2 percentage points to 41.6% in 2006, it continues to be the 3rd worst in the country and far below the national average of 62.7%. Similarly, the smear conversion rate has increased slowly since 2005/06. TB is a national priority programme and needs urgent attention in this district.

The proportion of ANC clients tested for HIV rose steadily since 2003/04, possibly indicative of better data quality and continued effort on the part of the programme managers. More emphasis needs to be placed on data quality in the programme though, as the data for nevirapine uptake amongst mothers and babies is inconsistent.

The district has the 4th lowest incidence of STIs (1.9%) despite a decrease in the male condom distribution rate to 7.4 condoms per male per year.

It is encouraging to see that the stillbirth and perinatal mortality rates declined in 2007/08 to 24.7 and 32.9 per 1000 births respectively and are in line with the national averages. The immunisation coverage decreased to 80.8% in 2007/08, while the DTP1-3 drop out rate increased to 1.9%.

DC31 Nkangala District Municipality		Year					District Rank (1=best)	National value
		2003/04	2004/05	2005/06	2006/07	2007/08	most recent	most recent
Demographic and socio-economic	Population total			1 096 877	1 107 212	1 113 878		47 844 347
	Medical aid coverage (%)			11.9	11.3	11.8	29	14.3
	Access to piped water (%) - (2005-06 GHS, 2007 Comm. Survey)			87.9	84.6	91.6	28	85.8
	Deprivation index - (high value = most deprived)			2.74	2.90	2.63	27	
	Socio-economic quintile - (1=poor, 5=best)			3	3	3		
Input	Non-hospital PHC expenditure per capita - (real 2007/08 prices)			180	209	226	44	302
	% District health services expenditure on District Management			6.1	6.5	8.1		5.1
	% District health services expenditure on District Hospitals			53.6	50.5	47.4		42.7
	Cost per PDE			1 454	1 337	1 443		1128
Process	Nurse clinical workload		30.0	27.0	26.0	18.3	45	23.7
	Average length of stay (ALOS)	2.8	3.1	2.8	4.0	4.4	30	4.4
	Bed utilisation rate (BUR)	57.9	58.9	65.2	71.1	65.4	28	65.3
	Clinic supervision rate	-	-	-	14.7	16.9	48	48.2
Output	Male condom distribution rate	0.0	0.0	3.1	8.3	7.4	31	11.8
	Immunisation coverage < 1 year	81.6	78.8	82.3	82.7	80.8	30	84.2
	Immunisation drop out rate (DTP1-3)	5.1	5.9	3.8	0.6	1.9	17	3.4
	Caesarean section rate	10.4	8.1	9.8	10.5	9.6		15.6
	Proportion ANC clients tested for HIV	8.1	9.0	30.4	57.7	75.0	40	79.6
	HIV prevalence among ANC clients tested (DHIS)	25.3	30.8	25.9	23.8	22.8	27	24.4
	HIV prevalence among ANC clients tested (survey)	-	-	-	26.8 (23.4-30.2)	27.6 (24.3-31.1)	27	28.3
	Nevirapine uptake rate among newborn babies of HIV+ve women	-	-	63.7	45.7	117.3	4	102.3
	Nevirapine uptake rate among pregnant HIV+ve women	94.0	65.1	57.3	82.2	76.0	22	76.1
	Utilisation rate	1.7	1.8	1.8	1.9	1.7	44	2.2
Outcome	Incidence of STI treated - new	3.1	2.7	2.4	2.4	1.9	4	4.4
	TB cure rate (2004 - 2006)	31.9	12	31.4	41.6		50	62.7
	TB smear conversion rate (2004 - 2007)	50.9	33.9	23.0	34.1	45.8	44	60.5
	TB case load (new Sm+)	-	-	-	-	2 274		135 604
	Diarrhoea incidence under 5 years	249.3	220.2	187.0	148.9	146.7	11	254.0
	Not gaining weight under 5 years rate	2.3	2.1	1.5	1.3	0.7	7	1.3
	Delivery rate in facility	63.4	74.6	77.3	77.2	74.1	34	80.6
Impact	Stillbirth rate	24.0	24.1	26.6	28.3	24.7	32	23.0
	Perinatal mortality rate in facility	31.3	34.2	33.0	36.2	32.9	33	31.1

Number of health facilities and beds	Clinic	CHCs	Mobile Service	District Hospital	Regional Hospital	Provincial Tertiary Hospital	Central Hospital	Specialised Hospital	Private Hospitals	Beds
Public sector facilities (2007) and beds (2005)	65	15	21	7	0	1	0	1		879
Private sector facilities and beds (2008)									3	503