

Northern Cape Province



The Northern Cape has the lowest population density of all the provinces and contains just over 2% of the country's population. It has a relatively good infrastructure with 94.4% of households having access to piped water and 13.8% of the population belonging to a medical aid scheme in 2007.

The Northern Cape had the 2nd highest per capita expenditure on PHC of all the provinces in 2007/08. However, since 2001/02 the inequity in the spending between the districts has increased, with the difference between the highest (Namakwa) and lowest (Siyanda) increasing to a three-fold difference. Similarly, the proportion spent on district management ranged widely from 22.3% in Kgalagadi to 2.5% in Frances Baard.

The data quality in Kgalagadi district was poor with substantial missing data which have affected indicators such as the average length of stay, bed utilisation rate and delivery rate, which in turn has affected the average performance of the province for 2007/08. The R1504 cost per PDE in district hospitals was the highest in the country in 2007/08, ranging from R820 in Siyanda to R2363 in Frances Baard.

Generally the PHC services were well used and the utilisation rate of 2.9 visits per person per year was the highest in SA in 2006/07 and in 2007/08. The nurse clinical workload of 25.4 patients per day had dropped by 2.9 percentage points over the previous year but was still above the national average of 23.7. The clinic supervision rate however, was the lowest of all the provinces and had deteriorated since 2006/07 to 20.9%, indicating that four out of five clinics had not been adequately supervised. This needs urgent managerial attention in order to improve the quality of PHC services.

There was an improvement in the TB cure rate from 38.3% in 2004 to 69.1% in 2006, although the data has fluctuated considerably amongst the districts over the last three years. The smear conversion rate continued to improve from 31.8% in 2004 to 50.7% in 2007. The incidence of new smear +ve TB of 340.1 cases per 100 000 people was amongst the highest in SA and this priority programme needs more attention.

Fiorenza Monticelli and Elliot Sello

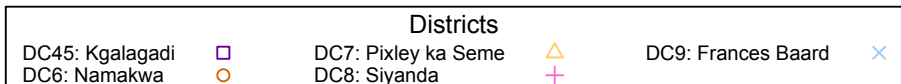
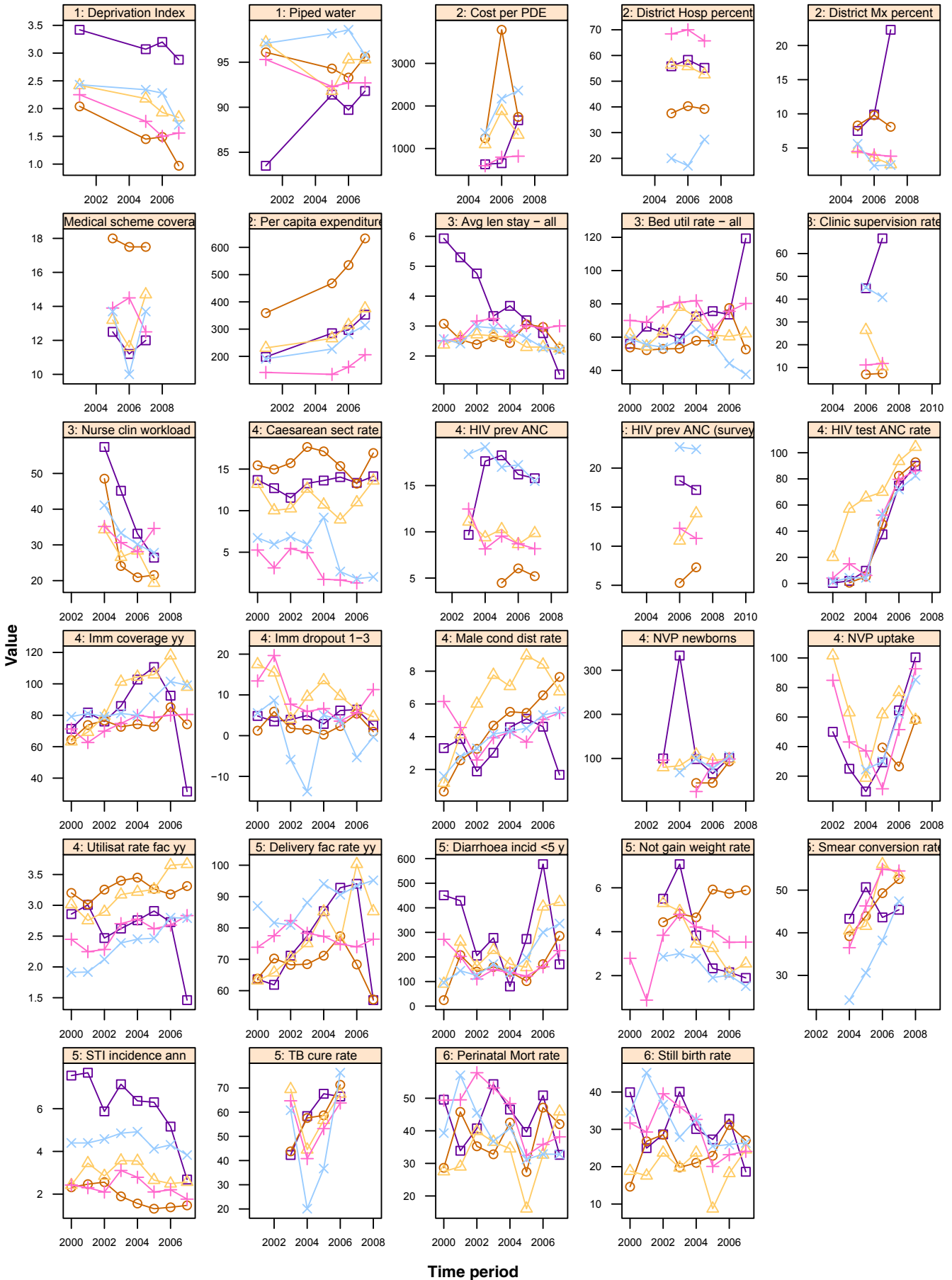
The HIV testing of pregnant mothers continued to improve and the HIV prevalence amongst ANC tested in 2007/08 was the lowest in the country as indicated by both the DHIS (11.9%) and the national ANC survey (16.1%). The nevirapine uptake of HIV+ve mothers and their babies has improved since 2004/05 although more attention needs to be given to the data quality and monitoring of this programme.

The incidence of new STIs has decreased from 4.4% 2003/04, at 2.8%, is the 2nd lowest in SA. However, the distribution of condoms was the lowest in SA at 5.4 per male per year, and has not increased significantly in the past five years. This important HIV prevention activity needs greater prioritisation.

The data surrounding the delivery rate in a facility in 2007/08 has been affected by missing data in a number of districts. The Caesarean section rate is the lowest in the country but varies considerably between districts, from 16.9% in Namakwa to a low of 2% in Frances Baard and zero in Siyanda. Clearly the data quality and level at which services are provided needs urgent attention. Both the stillbirth rate and perinatal mortality rates have fluctuated amongst the districts over the past five years, due to the small populations and some unreliable data.

The average proportion of children under 5 not gaining weight (2.6%) in 2007/08 varied extensively between districts from 1.5% in Frances Baard to 5.9% in Namakwa. The immunisation coverage and drop out rates have fluctuated over the last five years and are difficult to interpret.

Annual indicators for districts in Northern Cape (NC)



| NC Northern Cape | | Year | | | | | District Rank (1=best) most recent | National value most recent |
|--------------------------------|---|---------|---------|-----------|------------------|------------------|--|----------------------------------|
| | | 2003/04 | 2004/05 | 2005/06 | 2006/07 | 2007/08 | | |
| Demographic and socio-economic | Population total | | | 1 087 431 | 1 097 847 | 1 102 272 | | 47 844 347 |
| | Medical aid coverage (%) | | | 13.9 | 12.0 | 13.8 | - | 14.3 |
| | Access to piped water (%) - (2005-06 GHS, 2007 Comm. Survey) | | | 95.3 | 94.9 | 94.4 | - | 85.8 |
| | Deprivation index - (high value = most deprived) | | | - | - | - | - | |
| | Socio-economic quintile - (1=poor, 5=best) | | | - | - | - | - | |
| Input | Non-hospital PHC expenditure per capita - (real 2007/08 prices) | | | 249 | 290 | 341 | - | 302 |
| | % District health services expenditure on District Management | | | 6.0 | 5.4 | 7.2 | | 5.1 |
| | % District health services expenditure on District Hospitals | | | 47.0 | 45.9 | 46.5 | | 42.7 |
| | Cost per PDE | | | 949 | 1 205 | 1 540 | | 1128 |
| Process | Nurse clinical workload | | 40.9 | 31.4 | 28.5 | 25.4 | - | 23.7 |
| | Average length of stay (ALOS) | 3.0 | 2.9 | 2.8 | 2.6 | 2.0 | - | 4.4 |
| | Bed utilisation rate (BUR) | 64.4 | 70.2 | 65.0 | 65.5 | 66.0 | - | 65.3 |
| | Clinic supervision rate | - | - | - | 29.8 | 20.9 | - | 48.2 |
| Output | Male condom distribution rate | 4.6 | 4.9 | 5.3 | 5.8 | 5.4 | - | 11.8 |
| | Immunisation coverage < 1 year | 83.2 | 87.5 | 92.9 | 96.2 | 82.6 | - | 84.2 |
| | Immunisation drop out rate (DTP1-3) | -0.6 | 6.1 | 5.2 | 1.8 | 3.6 | - | 3.4 |
| | Caesarean section rate | 11.0 | 10.7 | 9.1 | 8.8 | 8.8 | | 15.6 |
| | Proportion ANC clients tested for HIV | 19.2 | 17.3 | 51.8 | 77.9 | 88.5 | - | 79.6 |
| | HIV prevalence among ANC clients tested (DHIS) | 11.9 | 10.7 | 13.6 | 13.0 | 11.9 | - | 24.4 |
| | HIV prevalence among ANC clients tested (survey) | - | - | - | 15.6 (12.7-18.5) | 16.1 (13.9-18.7) | - | 28.3 |
| | Nevirapine uptake rate among newborn babies of HIV+ve women | 83.0 | 86.6 | 88.8 | 77.6 | 102.5 | - | 102.3 |
| | Nevirapine uptake rate among pregnant HIV+ve women | 51.2 | 19.1 | 33.0 | 62.0 | 82.2 | - | 76.1 |
| Utilisation rate | 2.7 | 2.8 | 2.8 | 2.9 | 2.9 | - | 2.2 | |
| Outcome | Incidence of STI treated - new | 4.4 | 4.1 | 3.6 | 3.4 | 2.8 | - | 4.4 |
| | TB cure rate (2004 - 2006) | 64.6 | 38.3 | 50.1 | 69.1 | | - | 62.7 |
| | TB smear conversion rate (2004 - 2007) | 43.0 | 31.8 | 40.5 | 48.4 | 50.7 | - | 60.5 |
| | TB case load (new Sm+) | - | - | - | - | 3 749 | | 135 604 |
| | Diarrhoea incidence under 5 years | 196.5 | 130.6 | 182.3 | 328.4 | 296.0 | - | 254.0 |
| | Not gaining weight under 5 years rate | 4.3 | 3.5 | 2.9 | 2.6 | 2.6 | - | 1.3 |
| Impact | Delivery rate in facility | 80.0 | 85.4 | 84.3 | 88.2 | 80.4 | - | 80.6 |
| | Stillbirth rate | 29.7 | 29.9 | 22.3 | 25.9 | 24.8 | - | 23.0 |
| | Perinatal mortality rate in facility | 42.9 | 42.5 | 30.8 | 37.8 | 36.8 | - | 31.1 |

| Number of health facilities and beds | Clinic | CHCs | Mobile Service | District Hospital | Regional Hospital | Provincial Tertiary Hospital | Central Hospital | Specialised Hospital | Private Hospitals | Beds |
|---|--------|------|----------------|-------------------|-------------------|------------------------------|------------------|----------------------|-------------------|-------|
| Public sector facilities (2007) and beds (2005) | 118 | 20 | 32 | 24 | 1 | 1 | 0 | 3 | | 1 988 |
| Private sector facilities and beds (2008) | | | | | | | | | 4 | 335 |

Northern Cape

DC9 Frances Baard District Municipality



Frances Baard contains the largest population (370 026) in the Northern Cape. It has above average socio-economic development and 95.8% of households had access to piped water with 13.7% of people belonging to a medical aid scheme in 2007.

The expenditure on PHC increased by R34 per capita to R314 in 2007/08. The cost per patient day equivalent for the four district hospitals was the highest in the country at R2363 (R1235 more than the national

average) and this requires urgent attention. The district hospital services expenditure took up 27.3% of the total district budget, whilst 2.5% was spent on district management in 2007/08. Both of these values were the lowest in the province.

The bed utilisation rate in 2007/08 was the lowest in SA at 37.6% and has been declining gradually since 2004/05. The underlying data quality needs review. The average daily number of patients seen by nurses has decreased from 59.2 in 2003/04 to a more realistic 27.8 in 2007/08. The PHC utilisation rate has remained static at around 2.8 visits per person per year. The clinic supervision rate remained low with less than half of all clinics being regularly supervised. This is inadequate to improve the quality of PHC.

The TB programme showed a 39.6 percentage point increase from 36.7 in 2005 to 76.3% in 2006 which is probably due to underlying data quality issues. The smear conversion

rate increased to 47.4% in 2007. More managerial attention is required to monitor the data of the TB control programme.

The proportion of pregnant women tested for HIV improved once again in 2007/08 to 82.4%. The nevirapine uptake data, particularly for babies, was unstable and this programme requires improved monitoring. There was little improvement in the number of condoms distributed at 5.5 condoms per male per year in 2007/08. The STI incidence rate decreased to 3.8%.

Both the immunisation coverage of 99.1% and drop out rate of -0.3% are within the 10 best results in the country in 2007/08. The delivery rate in facility is high at 95.2% probably due to cross-boundary flow of pregnant women. However the Caesarean section rate of 2% in district hospitals needs review as such a low rate is incompatible with appropriate levels of service provision.

| DC9 Frances Baard District Municipality | | Year | | | | | District Rank (1=best) | National value |
|---|---|---------|---------|---------|------------------|------------------|---------------------------|-------------------|
| | | 2003/04 | 2004/05 | 2005/06 | 2006/07 | 2007/08 | most recent | most recent |
| Demographic and socio-economic | Population total | | | 365 518 | 368 546 | 370 026 | | 47 844 347 |
| | Medical aid coverage (%) | | | 13.7 | 10.0 | 13.7 | 25 | 14.3 |
| | Access to piped water (%) - (2005-06 GHS, 2007 Comm. Survey) | | | 98.2 | 98.6 | 95.8 | 18 | 85.8 |
| | Deprivation index - (high value = most deprived) | | | 2.34 | 2.28 | 1.71 | 13 | |
| | Socio-economic quintile - (1=poor, 5=best) | | | 3 | 3 | 4 | | |
| Input | Non-hospital PHC expenditure per capita - (real 2007/08 prices) | | | 227 | 281 | 314 | 20 | 302 |
| | % District health services expenditure on District Management | | | 5.6 | 2.4 | 2.5 | | 5.1 |
| | % District health services expenditure on District Hospitals | | | 20.0 | 17.1 | 27.3 | | 42.7 |
| | Cost per PDE | | | 1 370 | 2 171 | 2 363 | | 1128 |
| Process | Nurse clinical workload | | 41.1 | 33.3 | 30.2 | 27.8 | 17 | 23.7 |
| | Average length of stay (ALOS) | 2.9 | 2.9 | 2.6 | 2.3 | 2.2 | 2 | 4.4 |
| | Bed utilisation rate (BUR) | 58.1 | 64.7 | 57.0 | 44.2 | 37.6 | 51 | 65.3 |
| | Clinic supervision rate | - | - | - | 45.2 | 40.8 | 36 | 48.2 |
| Output | Male condom distribution rate | 4.2 | 4.3 | 4.5 | 5.3 | 5.5 | 45 | 11.8 |
| | Immunisation coverage < 1 year | 81.2 | 79.9 | 91.4 | 101.5 | 99.1 | 8 | 84.2 |
| | Immunisation drop out rate (DTP1-3) | -13.7 | 5.0 | 3.8 | -5.4 | -0.3 | 9 | 3.4 |
| | Caesarean section rate | 5.9 | 9.2 | 2.7 | 1.8 | 2.0 | | 15.6 |
| | Proportion ANC clients tested for HIV | 4.3 | 4.3 | 52.9 | 71.9 | 82.4 | 31 | 79.6 |
| | HIV prevalence among ANC clients tested (DHIS) | 18.4 | 19.2 | 17.0 | 17.2 | 15.5 | 12 | 24.4 |
| | HIV prevalence among ANC clients tested (survey) | - | - | - | 22.7 (18.7-26.7) | 22.4 (18.7-26.6) | 15 | 28.3 |
| | Nevirapine uptake rate among newborn babies of HIV+ve women | - | 68.2 | 99.8 | 77.3 | 105.1 | 7 | 102.3 |
| | Nevirapine uptake rate among pregnant HIV+ve women | 0.0 | 24.5 | 30.0 | 62.2 | 85.2 | 16 | 76.1 |
| | Utilisation rate | 2.4 | 2.5 | 2.5 | 2.8 | 2.8 | 14 | 2.2 |
| Outcome | Incidence of STI treated - new | 4.9 | 4.9 | 4.1 | 4.3 | 3.8 | 26 | 4.4 |
| | TB cure rate (2004 - 2006) | 60.8 | 20.1 | 36.7 | 76.3 | | 7 | 62.7 |
| | TB smear conversion rate (2004 - 2007) | 40.0 | 24.2 | 30.6 | 38.2 | 47.4 | 40 | 60.5 |
| | TB case load (new Sm+) | - | - | - | - | 1 224 | | 135 604 |
| | Diarrhoea incidence under 5 years | 171.3 | 134.8 | 197.4 | 300.3 | 335.9 | 37 | 254.0 |
| | Not gaining weight under 5 years rate | 3.0 | 2.8 | 1.9 | 2.0 | 1.5 | 34 | 1.3 |
| | Delivery rate in facility | 88.1 | 94.1 | 90.6 | 93.4 | 95.2 | 4 | 80.6 |
| Impact | Stillbirth rate | 27.9 | 32.7 | 25.5 | 25.9 | 26.3 | 42 | 23.0 |
| | Perinatal mortality rate in facility | 36.8 | 40.9 | 31.2 | 32.9 | 32.8 | 32 | 31.1 |

| Number of health facilities and beds | Clinic | CHCs | Mobile Service | District Hospital | Regional Hospital | Provincial Tertiary Hospital | Central Hospital | Specialised Hospital | Private Hospitals | Beds |
|---|--------|------|----------------|-------------------|-------------------|------------------------------|------------------|----------------------|-------------------|-------|
| Public sector facilities (2007) and beds (2005) | 28 | 3 | 4 | 4 | 0 | 1 | 0 | 2 | 1 | 1 026 |
| Private sector facilities and beds (2008) | | | | | | | | | 1 | 234 |

Northern Cape

DC 45 Kgalagadi District Municipality

ISRDP



Kgalagadi has a low population density and is the poorest district in the province. Household access to water increased from 83.5% in 2001 to 91.9% in 2007 and close on 12% of the population had access to a medical aid scheme in 2007.

The per capita expenditure on PHC increased by R56 per person to R353 in 2007/08. This is a cross-boundary district, and overall the data quality in this district is poor with substantial missing data from

Tshwangaro Hospital and a number of clinics and other district hospitals which affect many indicators for 2007/08 and make interpretation of trends problematic. In particular the unrealistically high bed utilisation rate, low ALOS and the 57% delivery rate in facilities have been affected. The steep decline in the PHC utilisation rate and very low value for 2007/08 also points to underlying data quality issues and missing data from a number of facilities. The nurse clinical workload has declined steadily since 2003/04 to 26.4 patients per nurse per day.

The TB cure rate did not improve in 2006 but remained above the national average whereas the smear conversion rate increased marginally to 45.4% in 2007. Much more managerial attention needs to be given to the TB control programme in order to improve the outcomes.

There was a continued increase in the proportion of pregnant women tested for HIV

to 90% in 2007/08. The data surrounding the nevirapine uptake rate for babies born to HIV+ve women has fluctuated and requires urgent improved monitoring of the data of this important HIV prevention programme.

The Caesarean section rate increased to 14.1% in 2007/08 and is close to the national average. The stillbirth and perinatal mortality rate indicators have also been affected by missing and poor quality of data and therefore inhibit further interpretation. The district had the lowest male condom distribution rates (1.7 per man, per year) in the country in 2007/08. Despite this, the STI incidence fell to 2.7% in 2007/08.

The immunisation coverage rate dropped from 92.5% in 2006/07 to 31.5% suggesting that the underlying data are unreliable. The immunisation drop out rate reduced to 2.6% in 2007/08 which is below the national average.

| DC45 Kgalagadi District Municipality | | Year | | | | | District Rank (1=best) most recent | National value most recent |
|--------------------------------------|---|---------|---------|---------|-----------------|------------------|--|----------------------------------|
| | | 2003/04 | 2004/05 | 2005/06 | 2006/07 | 2007/08 | | |
| Demographic and socio-economic | Population total | | | 196 004 | 197 609 | 197 337 | | 47 844 347 |
| | Medical aid coverage (%) | | | 12.5 | 11.2 | 12.0 | 28 | 14.3 |
| | Access to piped water (%) - (2005-06 GHS, 2007 Comm. Survey) | | | 91.4 | 89.7 | 91.8 | 27 | 85.8 |
| | Deprivation index - (high value = most deprived) | | | 3.07 | 3.20 | 2.88 | 31 | |
| | Socio-economic quintile - (1=poor, 5=best) | | | 3 | 3 | 3 | | |
| Input | Non-hospital PHC expenditure per capita - (real 2007/08 prices) | | | 285 | 297 | 353 | 13 | 302 |
| | % District health services expenditure on District Management | | | 7.5 | 9.9 | 22.3 | | 5.1 |
| | % District health services expenditure on District Hospitals | | | 55.8 | 58.3 | 55.2 | | 42.7 |
| | Cost per PDE | | | 631 | 656 | 1 664 | | 1128 |
| Process | Nurse clinical workload | | 57.4 | 45.2 | 33.1 | 26.4 | 19 | 23.7 |
| | Average length of stay (ALOS) | 3.3 | 3.7 | 3.2 | 2.8 | 1.4 | 1 | 4.4 |
| | Bed utilisation rate (BUR) | 59.0 | 72.4 | 75.6 | 73.6 | 119.4 | 1 | 65.3 |
| | Clinic supervision rate | - | - | - | 44.8 | 66.7 | 10 | 48.2 |
| Output | Male condom distribution rate | 3.0 | 4.6 | 5.1 | 4.6 | 1.7 | 52 | 11.8 |
| | Immunisation coverage < 1 year | 85.9 | 102.7 | 110.7 | 92.5 | 31.5 | 52 | 84.2 |
| | Immunisation drop out rate (DTP1-3) | 5.0 | 2.9 | 6.2 | 6.4 | 2.6 | 21 | 3.4 |
| | Caesarean section rate | 13.3 | 13.6 | 14.0 | 13.3 | 14.1 | | 15.6 |
| | Proportion ANC clients tested for HIV | 1.9 | 9.7 | 37.5 | 74.8 | 90.0 | 21 | 79.6 |
| | HIV prevalence among ANC clients tested (DHIS) | 9.7 | 17.6 | 18.3 | 16.2 | 15.8 | 13 | 24.4 |
| | HIV prevalence among ANC clients tested (survey) | - | - | - | 18.4 (7.5-29.2) | 17.2 (12.0-23.5) | 10 | 28.3 |
| | Nevirapine uptake rate among newborn babies of HIV+ve women | 100.0 | 333.3 | 98.6 | 65.7 | 101.4 | 16 | 102.3 |
| | Nevirapine uptake rate among pregnant HIV+ve women | 25.0 | 9.6 | 29.3 | 64.5 | 100.4 | 3 | 76.1 |
| Utilisation rate | 2.6 | 2.8 | 2.9 | 2.7 | 1.5 | 51 | 2.2 | |
| Outcome | Incidence of STI treated - new | 7.1 | 6.4 | 6.3 | 5.2 | 2.7 | 11 | 4.4 |
| | TB cure rate (2004 - 2006) | 42.3 | 58.4 | 67.6 | 66.5 | | 24 | 62.7 |
| | TB smear conversion rate (2004 - 2007) | 55.9 | 43.3 | 50.7 | 43.6 | 45.4 | 45 | 60.5 |
| | TB case load (new Sm+) | - | - | - | - | 581 | | 135 604 |
| | Diarrhoea incidence under 5 years | 277.4 | 80.2 | 273.2 | 577.6 | 170.1 | 16 | 254.0 |
| | Not gaining weight under 5 years rate | 7.1 | 3.8 | 2.3 | 2.2 | 1.9 | 38 | 1.3 |
| | Delivery rate in facility | 77.5 | 85.4 | 92.8 | 94.1 | 57.0 | 50 | 80.6 |
| Impact | Stillbirth rate | 40.1 | 30.1 | 27.3 | 32.8 | 18.6 | 10 | 23.0 |
| | Perinatal mortality rate in facility | 54.3 | 46.5 | 39.7 | 50.9 | 32.6 | 29 | 31.1 |

| Number of health facilities and beds | Clinic | CHCs | Mobile Service | District Hospital | Regional Hospital | Provincial Tertiary Hospital | Central Hospital | Specialised Hospital | Private Hospitals | Beds |
|---|--------|------|----------------|-------------------|-------------------|------------------------------|------------------|----------------------|-------------------|------|
| Public sector facilities (2007) and beds (2005) | 34 | 1 | 6 | 2 | 0 | 0 | 0 | 0 | | 278 |
| Private sector facilities and beds (2008) | | | | | | | | | 1 | 25 |

Northern Cape



Namakwa district has the lowest population density in the country and is the least deprived district in the Northern Cape. The percentage of people with access to a medical aid scheme in 2007 of 17.5%, is the highest in the province and well above the national average of 14.3%.

The PHC expenditure of R633 per person has been the highest in the country for the past three years. The cost per patient

DC6 Namakwa District Municipality

day equivalent in the six district hospitals declined to R1743 in 2007/08 but is ranked the 3rd highest in SA. The very high value in 2006/07 was likely due to data quality issues. The bed utilisation rate in 2007/08 of 52.6% is low and has fluctuated with missing denominators over the last two years; the data quality for this indicator needs to be checked. The average length of stay at 2.3 days in 2007/08 is the 4th lowest in the country. The nurse clinical workload of 21.6 patients per day in 2007/08 is also below the national average. The clinic supervision rate of 7.4% continues to be remarkably low and this important programme for improving quality needs urgent prioritisation.

The TB cure rate increased by 12.6 percentage points to 71.3% in 2006 while the smear conversion rate, at 52.6% in 2007, remains below the national average.

The percentage of pregnant women tested for HIV improved to 92.8% in 2007/08 and

the HIV prevalence of 5.2% (DHIS) and 7.3% (survey) rank Namakwa as the district with the lowest HIV prevalence in the country. The nevirapine uptake rates of HIV+ve women (58.1%) and of babies (93.1%) in 2007/08 are more than double those of 2006/07 and this raises a question as to the quality of the data.

The distribution of condoms increased to 7.6 condoms per male per year in 2007/08 but remains far below the national average. Despite this low distribution, the incidence of STIs in 2007/08 (1.5%) was the lowest in SA for a 3rd year running. The stillbirth and perinatal mortality rates have fluctuated due to the small numbers (as may be expected in a small population) but are still among the highest in the country. The immunisation coverage, at 74.3% is below the national average but the drop out rate improved to 1.0%.

| DC6 Namakwa District Municipality | | Year | | | | | District Rank (1=best) | National value |
|-----------------------------------|---|---------|---------|---------|-----------------|------------------|---------------------------|-------------------|
| | | 2003/04 | 2004/05 | 2005/06 | 2006/07 | 2007/08 | most recent | most recent |
| Demographic and socio-economic | Population total | | | 114 527 | 115 291 | 115 643 | | 47 844 347 |
| | Medical aid coverage (%) | | | 18.0 | 17.5 | 17.5 | 13 | 14.3 |
| | Access to piped water (%) - (2005-06 GHS, 2007 Comm. Survey) | | | 94.3 | 93.3 | 95.6 | 20 | 85.8 |
| | Deprivation index - (high value = most deprived) | | | 1.45 | 1.49 | 0.97 | 2 | |
| | Socio-economic quintile - (1=poor, 5=best) | | | 5 | 5 | 5 | | |
| Input | Non-hospital PHC expenditure per capita - (real 2007/08 prices) | | | 468 | 535 | 633 | 1 | 302 |
| | % District health services expenditure on District Management | | | 8.3 | 9.8 | 8.1 | | 5.1 |
| | % District health services expenditure on District Hospitals | | | 37.5 | 40.3 | 39.2 | | 42.7 |
| | Cost per PDE | | | 1 243 | 3 790 | 1 743 | | 1128 |
| Process | Nurse clinical workload | | 48.5 | 24.1 | 20.9 | 21.6 | 33 | 23.7 |
| | Average length of stay (ALOS) | 2.6 | 2.4 | 3.1 | 3.0 | 2.3 | 4 | 4.4 |
| | Bed utilisation rate (BUR) | 53.1 | 57.9 | 57.8 | 77.5 | 52.6 | 48 | 65.3 |
| | Clinic supervision rate | - | - | - | 7.0 | 7.4 | 52 | 48.2 |
| Output | Male condom distribution rate | 4.7 | 5.5 | 5.5 | 6.5 | 7.6 | 28 | 11.8 |
| | Immunisation coverage < 1 year | 72.7 | 74.3 | 72.8 | 85.1 | 74.3 | 45 | 84.2 |
| | Immunisation drop out rate (DTP1-3) | 1.5 | 0.2 | 2.3 | 5.4 | 1.0 | 13 | 3.4 |
| | Caesarean section rate | 17.7 | 17.1 | 15.4 | 13.2 | 16.9 | | 15.6 |
| | Proportion ANC clients tested for HIV | 0.6 | 5.3 | 45.2 | 82.4 | 92.8 | 19 | 79.6 |
| | HIV prevalence among ANC clients tested (DHIS) | 0.0 | 0.0 | 4.5 | 6.0 | 5.2 | 1 | 24.4 |
| | HIV prevalence among ANC clients tested (survey) | - | - | - | 5.3 (0.8 - 9.7) | 7.3 (2.7 - 15.2) | 1 | 28.3 |
| | Nevirapine uptake rate among newborn babies of HIV+ve women | - | 0.0 | 44.4 | 44.6 | 93.1 | 45 | 102.3 |
| | Nevirapine uptake rate among pregnant HIV+ve women | - | - | 39.4 | 26.6 | 58.1 | 41 | 76.1 |
| Utilisation rate | 3.4 | 3.5 | 3.3 | 3.2 | 3.3 | 7 | 2.2 | |
| Outcome | Incidence of STI treated - new | 1.9 | 1.6 | 1.3 | 1.4 | 1.5 | 1 | 4.4 |
| | TB cure rate (2004 - 2006) | 43.8 | 57.6 | 58.7 | 71.3 | | 14 | 62.7 |
| | TB smear conversion rate (2004 - 2007) | 43.0 | 39.2 | 43.9 | 49.3 | 52.6 | 37 | 60.5 |
| | TB case load (new Sm+) | - | - | - | - | 330 | | 135 604 |
| | Diarrhoea incidence under 5 years | 159.3 | 139.6 | 101.8 | 171.1 | 285.5 | 32 | 254.0 |
| | Not gaining weight under 5 years rate | 4.8 | 4.7 | 5.9 | 5.7 | 5.9 | 52 | 1.3 |
| | Delivery rate in facility | 68.4 | 71.2 | 77.4 | 68.4 | 57.2 | 49 | 80.6 |
| Impact | Stillbirth rate | 19.8 | 21.0 | 22.9 | 31.2 | 27.1 | 46 | 23.0 |
| | Perinatal mortality rate in facility | 32.8 | 42.5 | 27.4 | 47.1 | 42.1 | 48 | 31.1 |

| Number of health facilities and beds | Clinic | CHCs | Mobile Service | District Hospital | Regional Hospital | Provincial Tertiary Hospital | Central Hospital | Specialised Hospital | Private Hospitals | Beds |
|---|--------|------|----------------|-------------------|-------------------|------------------------------|------------------|----------------------|-------------------|------|
| Public sector facilities (2007) and beds (2005) | 17 | 8 | 6 | 6 | 0 | 0 | 0 | 0 | | 121 |
| Private sector facilities and beds (2008) | | | | | | | | | 1 | 26 |

Northern Cape

DC7 Pixley ka Seme District Municipality



Pixley ka Seme has a population of 185 440 people. Almost all households (95.3%) had access to piped water in 2007 and 14.7% of the population had access to a medical aid scheme in 2007.

The per capita expenditure on PHC increased by R61 per person to R315 in 2007/08 and was the 2nd highest in the province. The cost per PDE declined sharply to R1321 in 2007/08, contrary to the large increase in

2006/07. The bed utilisation rate remained low at 62.2% as did the average length of stay of 2.2 days. The PHC utilisation rate remained high at 3.7 visits per person during 2007/08 and ranked 3rd highest in the country. The nurse clinical workload fluctuated in the past four years making interpretation difficult. The clinic supervision rate decreased from 26.4% to a dismal 10.4%, meaning that only one out of ten clinics was regularly supervised, which is inadequate.

The number of TB patients cured increased from 56.7% to 67.6% in 2006 but the smear conversion rate decreased to 53.6% in 2007, and this is concerning for a priority health programme. Much more managerial attention is required for the TB control programme in this district.

The proportion of women tested for HIV at 104.4% in 2007/08 was the highest in the province and 7th highest in the country,

indicating that somehow more women than the total amount of ANC clients were tested at first visit. The data related to nevirapine uptake shows wide fluctuations and continues to be of dubious quality. The incidence of new STIs treated was stable at 2.6 in 2007/08. The condom distribution rate dropped in 2007/08 to 6.8 condoms per man, per year, and this important HIV preventive activity needs greater prioritisation. The immunisation coverage was 98% in 2007/08 and the immunisation drop out rate decreased from 6.3% in 2006/07 to 4.6% in 2007/08.

The delivery rate in facility declined to 85.3% while the Caesarean section rates increased to 13.6% in 2007/08. The data related to stillbirth and perinatal mortality rates continue to show wide fluctuations, as may be expected in a small population.

| DC7 Pixley ka Seme District Municipality | | Year | | | | | District Rank (1=best) | National value |
|--|---|---------|---------|---------|-----------------|------------------|---------------------------|-------------------|
| | | 2003/04 | 2004/05 | 2005/06 | 2006/07 | 2007/08 | (1=best) most recent | most recent |
| Demographic and socio-economic | Population total | | | 183 762 | 185 140 | 185 440 | | 47 844 347 |
| | Medical aid coverage (%) | | | 13.2 | 11.6 | 14.7 | 20 | 14.3 |
| | Access to piped water (%) - (2005-06 GHS, 2007 Comm. Survey) | | | 91.8 | 95.3 | 95.3 | 21 | 85.8 |
| | Deprivation index - (high value = most deprived) | | | 2.18 | 1.93 | 1.84 | 18 | |
| | Socio-economic quintile - (1=poor, 5=best) | | | 4 | 4 | 4 | | |
| Input | Non-hospital PHC expenditure per capita - (real 2007/08 prices) | | | 266 | 315 | 376 | 9 | 302 |
| | % District health services expenditure on District Management | | | 4.8 | 3.6 | 2.6 | | 5.1 |
| | % District health services expenditure on District Hospitals | | | 56.4 | 55.8 | 52.6 | | 42.7 |
| | Cost per PDE | | | 1 099 | 1 881 | 1 321 | | 1128 |
| Process | Nurse clinical workload | | 34.3 | 26.6 | 28.4 | 19.4 | 41 | 23.7 |
| | Average length of stay (ALOS) | 2.7 | 2.6 | 2.3 | 2.3 | 2.2 | 3 | 4.4 |
| | Bed utilisation rate (BUR) | 78.1 | 72.0 | 61.3 | 60.4 | 62.2 | 35 | 65.3 |
| | Clinic supervision rate | - | - | - | 26.4 | 10.4 | 50 | 48.2 |
| Output | Male condom distribution rate | 7.8 | 7.1 | 9.0 | 8.4 | 6.8 | 37 | 11.8 |
| | Immunisation coverage < 1 year | 101.3 | 104.4 | 105.9 | 118.0 | 98.0 | 10 | 84.2 |
| | Immunisation drop out rate (DTP1-3) | 9.5 | 13.6 | 9.7 | 6.3 | 4.6 | 37 | 3.4 |
| | Caesarean section rate | 12.6 | 10.7 | 8.9 | 11.0 | 13.6 | | 15.6 |
| | Proportion ANC clients tested for HIV | 57.1 | 65.7 | 70.0 | 93.6 | 104.4 | 7 | 79.6 |
| | HIV prevalence among ANC clients tested (DHIS) | 11.1 | 9.4 | 10.3 | 8.7 | 9.8 | 6 | 24.4 |
| | HIV prevalence among ANC clients tested (survey) | - | - | - | 10.7 (6.9-14.5) | 14.2 (10.0-19.4) | 6 | 28.3 |
| | Nevirapine uptake rate among newborn babies of HIV+ve women | 79.8 | 83.5 | 108.3 | 96.1 | 98.3 | 34 | 102.3 |
| | Nevirapine uptake rate among pregnant HIV+ve women | 63.1 | 18.8 | 61.8 | 76.8 | 58.1 | 42 | 76.1 |
| Utilisation rate | 3.2 | 3.2 | 3.3 | 3.7 | 3.7 | 3 | 2.2 | |
| Outcome | Incidence of STI treated - new | 3.6 | 3.6 | 2.7 | 2.5 | 2.6 | 9 | 4.4 |
| | TB cure rate (2004 - 2006) | 69.5 | 44.5 | 56.7 | 67.6 | | 21 | 62.7 |
| | TB smear conversion rate (2004 - 2007) | 37.4 | 40.5 | 41.6 | 56.1 | 53.6 | 35 | 60.5 |
| | TB case load (new Sm+) | - | - | - | - | 679 | | 135 604 |
| | Diarrhoea incidence under 5 years | 228.3 | 170.9 | 157.9 | 404.7 | 423.3 | 45 | 254.0 |
| | Not gaining weight under 5 years rate | 4.9 | 3.5 | 3.3 | 2.1 | 2.5 | 42 | 1.3 |
| | Delivery rate in facility | 75.1 | 85.2 | 75.8 | 100.3 | 85.3 | 19 | 80.6 |
| Impact | Stillbirth rate | 19.7 | 23.7 | 8.7 | 18.2 | 24.6 | 31 | 23.0 |
| | Perinatal mortality rate in facility | 36.6 | 34.5 | 16.1 | 32.7 | 45.9 | 51 | 31.1 |

| Number of health facilities and beds | Clinic | CHCs | Mobile Service | District Hospital | Regional Hospital | Provincial Tertiary Hospital | Central Hospital | Specialised Hospital | Private Hospitals | Beds |
|---|--------|------|----------------|-------------------|-------------------|------------------------------|------------------|----------------------|-------------------|------|
| Public sector facilities (2007) and beds (2005) | 27 | 2 | 3 | 9 | 0 | 0 | 0 | 0 | 0 | 287 |
| Private sector facilities and beds (2008) | | | | | | | | | 0 | 0 |

Northern Cape



Siyanda is the 2nd most populous district in the Northern Cape, with approximately 234 000 people, but has a low population density due to its huge size. This district falls in the highest socio-economic quintile with 92.7% of households having access to water and 12.5% of people belonging to a medical aid scheme in 2007.

The PHC expenditure of R206 per capita was the 3rd lowest in the country in 2007/08. In addition, a high percentage of the total

district budget (65.7%) was spent on the three district hospitals, which continues to be the highest proportion in SA. The cost per PDE for these hospitals was also low at R820. The bed utilisation rate increased to 80.2% which was the 5th highest in SA while the average length of stay was stable at three days.

Despite the low level of resources, the PHC utilisation rate of 2.8 visits per person per year in 2007/08 continued to be well above the national average. The nurse clinical workload figure improved to 34.6 patients per nurse per day. The clinic supervision rate of 11% means that only one out of every ten clinics was regularly supervised. This is inadequate to improve PHC quality.

There was a good increase in the TB cure rate from 40.8% in 2004 to 63.8% in 2006 but the smear conversion rate, at 54.5%, in 2007 shows no improvement. Much needs to be done in this priority programme.

There has been a significant increase in the proportion of pregnant women tested for HIV since 2004, with 86.1% being tested in 2007/08. The nevirapine uptake rates by HIV+ve mothers and their babies increased to 98.8% and 92.6% respectively although these may be very inaccurate due to problems with the denominators.

The condom distribution rate, although improved, remained one of lowest in SA with 5.5 condoms distributed per male in 2007/08. The STI incidence rate decreased slightly to 1.8%, the 3rd lowest in the country.

The delivery rate in a facility increased to 76.4% in 2007/08. The Caesarean section rate of zero percent in district hospitals is due to the fact that almost all Caesarean sections took place in Gordonia Regional Hospital. The immunisation coverage was static at 80.5% in 2007/08 while the immunisation drop out rate worsened further to 11.3%, the highest in the country.

| DC8 Siyanda District Municipality | | Year | | | | | District Rank (1=best) | National value | |
|-----------------------------------|---|--------------------------------------|---------|---------|------------------|------------------|------------------------|----------------|------|
| | | 2003/04 | 2004/05 | 2005/06 | 2006/07 | 2007/08 | most recent | most recent | |
| Demographic and socio-economic | Population total | | | 227 620 | 231 261 | 233 826 | | 47 844 347 | |
| | Medical aid coverage (%) | | | 13.9 | 14.5 | 12.5 | 26 | 14.3 | |
| | Access to piped water (%) - (2005-06 GHS, 2007 Comm. Survey) | | | 92.3 | 92.7 | 92.7 | 23 | 85.8 | |
| | Deprivation index - (high value = most deprived) | | | 1.77 | 1.50 | 1.56 | 9 | | |
| | Socio-economic quintile - (1=poor, 5=best) | | | 4 | 5 | 5 | | | |
| Input | Non-hospital PHC expenditure per capita - (real 2007/08 prices) | | | 134 | 161 | 206 | 50 | 302 | |
| | % District health services expenditure on District Management | | | 4.5 | 4.0 | 3.8 | | 5.1 | |
| | % District health services expenditure on District Hospitals | | | 68.4 | 70.0 | 65.7 | | 42.7 | |
| | Cost per PDE | | | 596 | 798 | 820 | | 1128 | |
| Process | Nurse clinical workload | | 35.2 | 30.6 | 28.1 | 34.6 | 9 | 23.7 | |
| | Average length of stay (ALOS) | 3.3 | 2.7 | 3.0 | 2.9 | 3.0 | 14 | 4.4 | |
| | Bed utilisation rate (BUR) | 80.9 | 81.9 | 64.2 | 75.5 | 80.2 | 5 | 65.3 | |
| | Clinic supervision rate | - | - | - | 11.1 | 11.8 | 49 | 48.2 | |
| Output | Male condom distribution rate | 3.9 | 4.3 | 3.7 | 5.1 | 5.5 | 46 | 11.8 | |
| | Immunisation coverage < 1 year | 74.8 | 79.9 | 78.6 | 80.0 | 80.5 | 32 | 84.2 | |
| | Immunisation drop out rate (DTP1-3) | 5.9 | 6.6 | 3.6 | 5.7 | 11.3 | 52 | 3.4 | |
| | Caesarean section rate | 4.9 | 1.7 | 1.7 | 1.3 | 0.0 | | 15.6 | |
| | Proportion ANC clients tested for HIV | 15.0 | 6.1 | 52.3 | 79.7 | 86.1 | 24 | 79.6 | |
| | HIV prevalence among ANC clients tested (DHIS) | 12.5 | 8.2 | 9.5 | 8.7 | 8.2 | 4 | 24.4 | |
| | HIV prevalence among ANC clients tested (survey) | - | - | - | 12.3 (8.4 -16.2) | 11.0 (7.5 -15.5) | 3 | 28.3 | |
| | Nevirapine uptake rate among newborn babies of HIV+ve women | 96.3 | - | 25.0 | 88.1 | 98.8 | 33 | 102.3 | |
| | Nevirapine uptake rate among pregnant HIV+ve women | 43.2 | 37.0 | 11.4 | 51.5 | 92.6 | 10 | 76.1 | |
| Outcome | Utilisation rate | 2.7 | 2.8 | 2.6 | 2.7 | 2.8 | 13 | 2.2 | |
| | Incidence of STI treated - new | 3.1 | 2.8 | 2.1 | 2.2 | 1.8 | 3 | 4.4 | |
| | TB cure rate (2004 - 2006) | 64.7 | 40.8 | 53.2 | 63.8 | | 31 | 62.7 | |
| | TB smear conversion rate (2004 - 2007) | 45.8 | 36.5 | 46.3 | 54.9 | 54.5 | 32 | 60.5 | |
| | TB case load (new Sm+) | - | - | - | - | 935 | | 135 604 | |
| | Diarrhoea incidence under 5 years | 148.1 | 136.6 | 122.4 | 159.8 | 225.8 | 24 | 254.0 | |
| | Not gaining weight under 5 years rate | 4.8 | 4.2 | 4.0 | 3.5 | 3.5 | 48 | 1.3 | |
| | Delivery rate in facility | 78.3 | 77.3 | 74.9 | 74.0 | 76.4 | 32 | 80.6 | |
| | Impact | Stillbirth rate | 36.0 | 32.7 | 20.1 | 23.2 | 24.1 | 28 | 23.0 |
| | | Perinatal mortality rate in facility | 53.2 | 48.4 | 32.5 | 35.8 | 38.2 | 44 | 31.1 |

| Number of health facilities and beds | Clinic | CHCs | Mobile Service | District Hospital | Regional Hospital | Provincial Tertiary Hospital | Central Hospital | Specialised Hospital | Private Hospitals | Beds |
|---|--------|------|----------------|-------------------|-------------------|------------------------------|------------------|----------------------|-------------------|------|
| Public sector facilities (2007) and beds (2005) | 12 | 6 | 13 | 3 | 1 | 0 | 0 | 1 | | 276 |
| Private sector facilities and beds (2008) | | | | | | | | | 1 | 50 |